



**Foothills Landscape Project
Collaborative Group**

Agenda

July 19, 2023

Union County Community Center
129 Union County Recreation Road
Blairsville, GA 30512

Welcome and Introductions

Old Business

Understanding Implementable vs Collaborative Actions
Completed and In-Progress Actions

New Business

Implementable Actions
Collaborative Actions

Working Group Session

Select Representatives for FCG voting
Discussion of needs related to Collaborative Actions

Reconvene the Whole

Needs of Working Groups
Next Steps

Public Comment

Adjourn

Understanding Implementable vs. Collaborative Actions

1. The Purpose of the Foothills Landscape Project EA

2. Implementable vs. Collaborative Actions

- Implementable: USFS will inform
- Collaborative: USFS requests FCG feedback

3. Actions Outside of the Foothills Landscape: USFS will inform

4. FCG Meetings and Workflow for Collaborative Actions – Process Example

Meeting 1 – Action 1 Presented (draft plan)
FCG Working Groups – Identify Information Needs, Action 1

Interim – Subject Matter Expert Input, Field Trips, Etc.
Ad Hoc Working Group Meetings

Meeting 2 – Feedback on Action 1 to USFS
Action 2 Presented (draft plan)
FCG Working Groups – Identify Information Needs, Action 2

Interim – Subject Matter Expert Input, Field Trips, Etc.
Ad Hoc Working Group Meetings

Meeting 3 – Action 1 Presented (final plan)
Vote on Action 1
Feedback on Action 2 to USFS
Action 3 Presented

5. Signing Up for Project Updates:

<https://www.fs.usda.gov/detail/conf/home/?cid=fseprd514937>

Foothills Landscape Project

Foothills Landscape Project Summary

Upcoming Opportunities

The Foothills Collaborative Group members will meet at 11a.m. on Tuesday, February 28, 2023, at the Chattahoochee-Oconee National Forest Supervisor's Office (1755 Cleveland Highway, Gainesville, GA 30501) to finalize the group's operating guidance and receive an update on current forest projects. The meeting is open to the public.

The Foothills Collaborative Group will be providing feedback and recommendations on three projects within the Foothills Landscape:

- [Updated Mooneyham Implementation Area Guide](#)
- [Draft Chattooga Ranger District Prescribed Burning Implementation Guide](#)

The Collaborative will also be informed about implementable actions from the Environmental Assessment that are being taken on the landscape:

- [Final Conasauga Ranger District FY23 Implementable Activities Implementation Plan](#)

Project Summary

The Foothills Landscape Project was proposed to create, restore, and maintain resilient ecosystems through a variety of active management techniques that address unique habitats, forest composition and structure, risks to forest health, resilience to climate change, forest successional diversity, aquatic and terrestrial wildlife habitat, communities at risk of wildfire, and sustainable recreation opportunities.

This project is part of the Forest's larger strategy to systematically approach the goals and objectives in the Land and Resource Management Plan, or [Forest Plan](#), in the face of a dynamic, ever-changing environment. The range of management actions proposed are a necessary step to ensure these public lands remain healthy and resilient for generations to come.

A final Decision Notice which documents the decision and rationale for approving the proposed project was published on April 27, 2022, and is based on and supported by the October 2021 Foothills Landscape Project Programmatic Environmental Assessment (EA). These documents and supporting materials can be viewed on the project webpage at: <https://www.fs.usda.gov/project/?project=52509>

Alerts & Warnings

[Rock Creek Road \(FSR #69\) Closure](#)

[Dry Creek Road Maintenance](#)

[Lake Conasauga Reservation Only](#)

[Recreation passes available online, by phone and in-person](#)

[Road Closures on the Chattooga River Ranger District](#)

[Coleman River Rd \(FSR #54\) Closure](#)

[CAUTION Waterfall Dangers](#)


[CALL BEFORE YOU HAUL - ATV and OHV](#)

[Panther Creek Trail Temporary Hiker Restrictions](#)

[Don't Move Firewood!](#)

[View All Forest Alerts](#)

Quick Links

[Sign up to stay in touch!](#) 



Sign up to stay in touch!

Sign up to get the news and updates you want about Chattahoochee-Oconee National Forest delivered to your inbox.

* Email Address

Email Lists

- Tallulah River Road construction updates
- #BurnAlerts - Chattahoochee NF
- #BurnAlerts - Oconee NF
- Children's Forest Network of the Georgia Mountains
- Foothills Collaborative Group updates
- News Releases - Blue Ridge Ranger District (Blairsville, Dahlonega, Blue Ridge and surrounding areas)
- News Releases - Chattooga River Ranger District (Clayton, Toccoa, Helen and surrounding areas)
- News Releases - Conasauga Ranger District (Dalton, Chatsworth, Ellijay and surrounding areas)
- News Releases - Oconee Ranger District (Eatonton, Monticello and surrounding areas)

By submitting this form, you are consenting to receive marketing emails from: Chattahoochee-Oconee National Forests, 1756 Cleveland Hwy, Gainesville, GA, 30601 United States, <http://www.fs.usda.gov/cont/>. You can revoke your consent to receive emails at any time by using the [SafeUnsubscribe®](#) link, found at the bottom of every email. [Emails are serviced by Constant Contact.](#) [Our Privacy Policy.](#)

Sign Up

Foothills Accomplishments

District	Implementation Area	Action	Units Accomplished
CRD	Mill Creek/Rockflat Branch	Convert the Rocky Flats OHV trail back to a system road	3.36 miles
CRD	Jigger Creek	Continuation of Rx burning - Buffalo Rx Unit	26 acres
CRD	Mill Creek/Rockflat Branch	Continuation of Rx Burning - Rocky Flats Rx Unit	77 acres
CRRD	Tallulah River	Continuation of Rx Burning – Slick Shoals	1,943 acres
CRRD	Tiger	Continuation of Rx Burning – Stonewall	338 acres

Foothills Activities associated with other Decisions

District	Implementation Area	Activity	Decision
CRD	Sumac-North Prong	Sumac III timber sale	Sumac EA
BRRD	Three Sister's	Three Sister's timber sale	Forest Health South EA
BRRD	Three Sister's	Road closure order FSR 135 and 135A	CE – in process
CRRD	Sarah's Creek	Metcalf creek culvert replacement	CE - completed
CRRD	Sarah's Creek	Earl's Ford dispersed rec improvements outside WSR corridor	CE – in process

Foothills Landscape Project Implementation Plan

Implementation Area: [Holly Creek](#)

Ranger District: Conasauga

Date: June 22, 2023

Instructions: Use the tables and template(s) that follow to summarize all actions to be implemented within the IA; drafted during Step 3 and finalized during Step 8. The Plan Summary table should list all activities selected from the checklists below, with each activity described in detail in the section that follows. When completing all project information, ensure all information is sufficient and relevant to provide a full and detailed project description. The summary table below can be used to quickly track the number of projects within the IA and the acres or miles of disturbance impacts.

Plan Summary

Activity Name (should correspond w/ Table 17 of EA)	Location (i.e., HUC, Compartment Stand, and or Geographic Description)	Draft Acres and/or miles of road/trails, etc.	Final Acres and /or miles of road/trails, etc.	Anticipated year(s) implementation would begin
Implement changes to system road ML and/or use restrictions	NFSR 18, Holly Creek Road	1.2 miles, approximately		2023

Activities Implementable from Final DN: Select all that apply. See Table 17 in the EA for full description of action and connected actions.

Selected for this Project	Activities That are Part of This Project	Primary Actions	Location (ie. HUC, Compartment Stand, and or Geographic Description)	Draft Acres and/or miles of road/trails, etc.	Final Acres and /or miles of road/trails, etc.
<input type="checkbox"/>	Bog improvement actions including hydrologic restoration and removal of encroaching vegetation (may include commercial treatment)	Raise stream profiles by filling or plugging ditches Removing encroaching vegetation by commercial, non-commercial harvest	Click or tap here to enter text.	Click or tap here to enter text.	Click or tap here to enter text.

Foothills Landscape Project
Pre-Implementation Process Guide and Checklist

Selected for this Project	Activities That are Part of This Project	Primary Actions	Location (ie. HUC, Compartment Stand, and or Geographic Description)	Draft Acres and/or miles of road/trails, etc.	Final Acres and /or miles of road/trails, etc.
<input type="checkbox"/>	Canebrake restoration actions including overstory removal (may include commercial treatment)	Removing encroaching vegetation by commercial, non-commercial harvest	Click or tap here to enter text.	Click or tap here to enter text.	Click or tap here to enter text.
<input type="checkbox"/>	Small-whorled pogonia improvement actions including experimental canopy and midstory removal	Non-commercial thinning or hand clearing	Click or tap here to enter text.	Click or tap here to enter text.	Click or tap here to enter text.
<input type="checkbox"/>	Non-commercial release of hemlock trees to decrease susceptibility of hemlock to hemlock woody adelgid outside of HCAs	Individual tree release, non-commercial thinning	Click or tap here to enter text.	Click or tap here to enter text.	Click or tap here to enter text.
<input type="checkbox"/>	Designate small blocks of old growth	Allocate small blocks of old growth stands that are arranged in mosaics and connected by other habitat types	Click or tap here to enter text.	Click or tap here to enter text.	Click or tap here to enter text.
<input type="checkbox"/>	Stream habitat improvements	Add large woody debris to stream channels through cut and leave operations (mechanical and non-mechanical) Maintain and enhance existing in-stream structures Stabilize streambanks	Click or tap here to enter text.	Click or tap here to enter text.	Click or tap here to enter text.
<input type="checkbox"/>	Continuation of prescribed burning within existing burn blocks	Prescribed burning during dormant and/or early growing season on a recurring basis			Click or tap here to enter text.
<input type="checkbox"/>	Decommissioning of maintenance level (ML) 2 and ML1 system roads	Close road/trail to public; may include full obliteration of roadbed, removal of stream crossing fills/ culverts with restoration of channel, crushing and burying inlets, seeding, fertilizing, mulching, drainage improvements, scattering slash, etc.	Click or tap here to enter text.	Click or tap here to enter text.	Click or tap here to enter text.
<input type="checkbox"/>	Implement changes to system road ML and/or use restrictions	Reduce ML in system roads, including seasonal closure in some roads update MVUM	Click or tap here to enter text.	Click or tap here to enter text.	Click or tap here to enter text.

Foothills Landscape Project
Pre-Implementation Process Guide and Checklist

Selected for this Project	Activities That are Part of This Project	Primary Actions	Location (ie. HUC, Compartment Stand, and or Geographic Description)	Draft Acres and/or miles of road/trails, etc.	Final Acres and /or miles of road/trails, etc.
<input checked="" type="checkbox"/>	Implement changes to system road ML and/or use restrictions	Increase ML, pave road, install safety features, improve drainage (NFSR 18, Holly Creek)	NFSR 18, Holly Creek Road	1.2 miles, approximately	Click or tap here to enter text.
<input type="checkbox"/>	Reconstruction of existing roads that are causing sedimentation to streams, particularly within watersheds with 305b and 303d listed streams	Widen curves Upgrade culverts Harden or repair low-water stream crossings Upgrade or reconstruct drainage features, spot reconstruction if needed Upgrade surface material and configuration using Georgia BMPs	Click or tap here to enter text.	Click or tap here to enter text.	Click or tap here to enter text.
<input type="checkbox"/>	Decommission a section of Tatum Lead motorized trail and Milma Creek OHV trails	Close trail to public; may include full obliteration of roadbed, removal of stream crossing fills/ culverts with restoration of channel, crushing and burying inlets, seeding, fertilizing, mulching, drainage improvements, scattering slash, etc.	Click or tap here to enter text.	Click or tap here to enter text.	Click or tap here to enter text.
<input type="checkbox"/>	Convert the Tibbs All-Terrain vehicle (ATV) trail and a section of Milma Creek OHV trail back to a system road	Administratively convert a section of the trail back to a system road	Click or tap here to enter text.	Click or tap here to enter text.	Click or tap here to enter text.
<input type="checkbox"/>	Convert the Rocky Flats OHV trail back to a system road	Administratively convert a section of the trail back to a system road	Click or tap here to enter text.	Click or tap here to enter text.	Click or tap here to enter text.
<input type="checkbox"/>	Decommission low-use trails (Murray's Lake Trail and Peeples Lake Trail)	Administrative removal of trails from system Update maps	Click or tap here to enter text.	Click or tap here to enter text.	Click or tap here to enter text.
<input type="checkbox"/>	Decommission Boggs Creek developed campground	Administratively decommission campground	Click or tap here to enter text.	Click or tap here to enter text.	Click or tap here to enter text.

**Foothills Landscape Project
Pre-Implementation Process Guide and Checklist**

Selected for this Project	Activities That are Part of This Project	Primary Actions	Location (ie. HUC, Compartment Stand, and or Geographic Description)	Draft Acres and/or miles of road/trails, etc.	Final Acres and /or miles of road/trails, etc.
<input type="checkbox"/>	Decommission Oakey Mountain developed campground	Close to public; remove all infrastructure (may include full obliteration of infrastructure), hardened surfaces, seeding, fertilizing, mulching, drainage improvements, scattering slash, etc.	Click or tap here to enter text.	Click or tap here to enter text.	Click or tap here to enter text.

Commercial Activities (May only occur in MRx suitable for timber production per selected Alternative (Alt 3)): Select all that apply. See Table 17 in the EA for full description of action and connected actions.

Selected for this Project	Activities That are Part of This Project	Primary Actions	Location (ie. HUC, Compartment Stand, and or Geographic Description)	Draft Acres and/or miles of road/trails, etc.	Final Acres and /or miles of road/trails, etc.
<input type="checkbox"/>	Restoration of southern yellow pine forest on dry sites dominated by mid to late-successional Virginia or white pine	Two aged regeneration harvest	Click or tap here to enter text.	Click or tap here to enter text.	Click or tap here to enter text.
<input type="checkbox"/>	Restoration of southern yellow pine forest or oak forest on sites currently occupied by off-site pine plantations (loblolly or white pine) or failed shortleaf or pitch pine plantations	Two-aged regeneration harvest	Click or tap here to enter text.	Click or tap here to enter text.	Click or tap here to enter text.
<input type="checkbox"/>	Maintenance of southern yellow pine forest	Commercial thinning	Click or tap here to enter text.	Click or tap here to enter text.	Click or tap here to enter text.
<input type="checkbox"/>	Maintenance of southern yellow pine forest	Expanding gap treatment	Click or tap here to enter text.	Click or tap here to enter text.	Click or tap here to enter text.
<input type="checkbox"/>	Maintenance of oak forest	Commercial thinning	Click or tap here to enter text.	Click or tap here to enter text.	Click or tap here to enter text.

**Foothills Landscape Project
Pre-Implementation Process Guide and Checklist**

Selected for this Project	Activities That are Part of This Project	Primary Actions	Location (ie. HUC, Compartment Stand, and or Geographic Description)	Draft Acres and/or miles of road/trails, etc.	Final Acres and /or miles of road/trails, etc.
<input type="checkbox"/>	Maintenance of oak forest	Expanding gap treatment	Click or tap here to enter text.	Click or tap here to enter text.	Click or tap here to enter text.
<input type="checkbox"/>	Commercial and non-commercial thinning of pine plantations to improve forest health	Commercial thinning	Click or tap here to enter text.	Click or tap here to enter text.	Click or tap here to enter text.
<input type="checkbox"/>	Create young forest (ESH) in mesic hardwoods	Two-aged regeneration harvest	Click or tap here to enter text.	Click or tap here to enter text.	Click or tap here to enter text.
<input type="checkbox"/>	Create young forest (ESH) by daylighting roads and permanent openings	Two-aged regeneration harvest	Click or tap here to enter text.	Click or tap here to enter text.	Click or tap here to enter text.
<input type="checkbox"/>	Creating young oak forest (ESH)	Shelterwood or two-aged regeneration harvests	Click or tap here to enter text.	Click or tap here to enter text.	Click or tap here to enter text.
<input type="checkbox"/>	Restoring open woodland habitats on appropriate sites	Commercial or non-commercial thinning	Click or tap here to enter text.	Click or tap here to enter text.	Click or tap here to enter text.
<input type="checkbox"/>	Canopy gap creation in closed-canopied mesic stands	Commercial and non-commercial thinning Overstory and midstory reduction w/ variable tree density retention; gaps implemented would total <25% of stand acreage with gap size no more than ¼-acre each.	Click or tap here to enter text.	Click or tap here to enter text.	Click or tap here to enter text.
<input type="checkbox"/>	Create or expand permanent openings	Remove trees Prepare site by grading and stump removal		Click or tap here to enter text.	Click or tap here to enter text.
<input type="checkbox"/>	Reduce hazardous fuels in the WUI	Mid-story reduction Commercial or non-commercial thinning	Click or tap here to enter text.	Click or tap here to enter text.	Click or tap here to enter text.

Non-Commercial Action(s): Select all that apply. See Table 17 in the EA for full description of action and connected actions.

Selected for this Project	Activities That are Part of This Project	Primary Actions	Location (ie. HUC, Compartment Stand, and or Geographic Description)	Draft Acres and/or miles of road/trails, etc.	Final Acres and /or miles of road/trails, etc.
<input type="checkbox"/>	Maintenance of oak forest	Mid-story reduction	Click or tap here to enter text.	Click or tap here to enter text.	Click or tap here to enter text.
<input type="checkbox"/>	Maintenance of oak forest	Crown-touching release with manual methods	Click or tap here to enter text.	Click or tap here to enter text.	Click or tap here to enter text.
<input type="checkbox"/>	Commercial and non-commercial thinning of pine plantations to improve forest health	Non-commercial thinning	Click or tap here to enter text.	Click or tap here to enter text.	Click or tap here to enter text.
<input type="checkbox"/>	Replacement of culverts, fords, or bridges to increase aquatic organism passage and function	Replacement of culverts, fords, or bridges	Click or tap here to enter text.	Click or tap here to enter text.	Click or tap here to enter text.
<input type="checkbox"/>	Prescribed fire in new burn blocks to facilitate restoration or maintenance of fire-adapted ecosystems or to reduce hazardous fuels	Prescribed burning during dormant and/or early growing season on a recurring basis	Click or tap here to enter text.	Click or tap here to enter text.	Click or tap here to enter text.
<input type="checkbox"/>	Willis Knob Horse Trail Improvements	Construct new trail Re-route and construct/re-construct portions of trail on areas with resource concerns outside of the WSR, block or obliterate problem portions of trail Relocate parking area Construction of connector trails from parking to campground Campground improvements	Click or tap here to enter text.	Click or tap here to enter text.	Click or tap here to enter text.

**Foothills Landscape Project
Pre-Implementation Process Guide and Checklist**

Selected for this Project	Activities That are Part of This Project	Primary Actions	Location (ie. HUC, Compartment Stand, and or Geographic Description)	Draft Acres and/or miles of road/trails, etc.	Final Acres and /or miles of road/trails, etc.
<input type="checkbox"/>	Develop and maintain sustainable recreation within the WSR corridor – Earls Ford	Construction of new system trails Removal and restoration of degraded sites and designation of dispersed camping areas	Click or tap here to enter text.	Click or tap here to enter text.	Click or tap here to enter text.
<input type="checkbox"/>	Willis Knob Horse Trail Improvements within the WSR	Re-route and construct/re-construct portions of trail on areas with resource concerns, block or obliterate problem portions of trail	Click or tap here to enter text.	Click or tap here to enter text.	Click or tap here to enter text.

Action(s) or Conditions that Need Additional Analysis (Please Refer to Step 2 Resource Sections):

Specific Action or Condition Needing Analysis, if applicable	Analysis complete?
Click or tap here to enter text.	<input type="checkbox"/> yes <input type="checkbox"/> no
Click or tap here to enter text.	<input type="checkbox"/> yes <input type="checkbox"/> no
Click or tap here to enter text.	<input type="checkbox"/> yes <input type="checkbox"/> no
Click or tap here to enter text.	<input type="checkbox"/> yes <input type="checkbox"/> no

Activity Name: Implement changes to system road ML and/or use restrictions (pave Holly Creek Road, install safety features, improve drainage, increase ML)

Detailed Description: Holly Creek Road (NFSR 18), where it closely parallels a 1.5-mile section of Holly Creek, is proposed for paving. The purpose of this project is to reduce sedimentation to the stream, which threatens aquatic habitat for rare and endangered fish and mussels. Frequent maintenance of this highly utilized, unpaved road by motor grader has been necessary to allow for public access to this popular recreational area as well as accommodating local traffic to private residences. Paving would eliminate the need for road grading and the constant addition of gravel to the road, which eventually ends up in the stream. The paving project would include replacement of any undersized culverts, adding roadbed base materials, reshaping ditches, addition of asphalt or other paving materials, elimination of some of the existing 'pull-off' parking and improvement/paving of other areas, and construction of speed control and other safety features.

Problem areas along the affected section of road will also be repaired: for example, there is an existing area where Holly Creek is undercutting the road and the streambank needs stabilization, and several visitor-created paths from road to creek which are funneling sediment into the stream need hardening or relocating.

The Forest has received funding for the paving project due to its location in a Priority Watershed with a Watershed Restoration Action Plan (WRAP). The paving of the section paralleling Holly Creek was identified as an Essential Project in the WRAP, which qualified it for funding. The paving/construction will be accomplished through an agreement with The Nature Conservancy.

Map(s) Attached

Watershed(s) (6th-level HUC) where activity is planned:

Emery Creek-Holly Creek HUC12: 031501010401

MRx(s) where activity would occur: 7.B



Holly Creek Road closely parallels Holly Creek and contributes sediment to this valuable aquatic ecosystem with federally-listed fish and mussels.

Resource Project Design Features: Do project activities follow all listed resource-specific PDFs in Step 2?

Yes **No** (If no, document if additional analysis per NEPA is triggered and if so, analysis is referenced and/or attached prior to finalization.)

Additional Project Design Features: *Add any additional Project Design Features necessary to avoid significant impacts.*

Use list at end of this plan in Attachment A to guide selection of all that apply. List PDF numbers.

Construction measures from the USFWS Biological Opinion. Most are related to the eventual bridge replacement.

1. The USFS will coordinate with the Service's Athens Field Office as project design is refined to ensure that impacts to the blue shiner are considered and minimized where practicable. The USFS will notify the Service seven days before in-water work begins.
2. Demolition activities or construction or placement of equipment in the wetted channel will not take place within waterbodies from May 1 through August 31 to protect the spawning period of the blue shiner. Activities prohibited during this time period include removal of existing structures, construction of any bent, work bridge or stone ramp, or installation of cofferdam, jersey barrier, sandbags, turbidity curtain or other similar exclusionary material. If devices to exclude fish are deemed necessary, work within these areas will be permitted during the restricted time provided that structures are installed to exclude fish prior to the spawning season. Blasting is not permitted within the stream at any time.
3. Operation of equipment in the stream shall be kept to a minimum, and equipment should work from a stable stream bank at all possible times. In the event equipment must enter the stream for demolition, removal of debris and/or installation of in-stream structures, disturbance should be kept to a minimum and work should be brought to a completion at the earliest possible time. No more than 50% of the wetted channel should be blocked with construction equipment or exclusionary devices at any one time.
4. Protective material (either tarps or wooden platforms) shall be installed under the bridge to contain any seepage or drips during construction and demolition.
5. Vegetation removal shall be kept at the minimum during construction. Areas outside of the required footprint shall be pruned to ground level and not grubbed, except where necessary. Rip-rap should be kept to a minimum, and any area along the stream bank of Holly Creek that does not require rip-rap shall be stabilized with slope matting and planted with live willow stakes or grassed at the earliest time possible. Jute or another natural slope/erosion control mats are recommended.
6. The USFS shall provide the contractor with materials regarding the blue shiner and their habitat requirements. The contractor shall inform all employees and subcontractors about the sensitive nature of the waterway in order to limit the physical disturbance to the habitat and/or determine if an individual is injured or killed. Adequate information shall be provided by USFS to the contractor that informs all personnel of the civil and/or criminal penalties that exist under the Endangered Species Act.
7. Equipment staging areas and equipment maintenance areas (particularly for oil changes) shall be located away from the banks of Holly Creek to minimize the potential for wash water, petroleum products, or other contaminants from construction equipment entering the watershed. If concrete forms must be dewatered during active pouring, an environmental dirt bag should be utilized over a pad of gravel, located in a manner where lye will not enter the stream. The established parking area located along Holly Creek Road on the western side of the Holly Creek bridge is suggested as a construction staging area or location for an environmental dirt bag.
8. All disturbed soil, excavation spoil and stockpiled materials shall be mulched daily or covered with erosion control mats. Stockpiled materials or borrow sites shall be placed away from the stream banks to prevent rain runoff and sediments from flowing into the stream. Grading and grassing will be implemented as quickly as possible to minimize exposure to potential erosion hazards. Double rows of type C silt fence shall be installed where water may drain from the construction site into the streams.
9. Pesticides or herbicides (including those for right-of-way maintenance) shall not be used within 200 feet of Holly Creek. If warranted, fertilizer shall only be used while grassing graded areas to achieve site stabilization.
10. The USFS shall notify the Service and Georgia Department of Natural Resources (GDNR) immediately if equipment, concrete debris, paving materials, litter, bridge

**Foothills Landscape Project
Pre-Implementation Process Guide and Checklist**

falsework, demolition debris or any other materials enter Holly Creek.

11. The Service should approve the project erosion control plan. Construction activities will be scheduled to ensure the installation of permanent erosion control features at the earliest time during project construction. Any erosion control failure or other circumstances that may cause or allow sediment or pollutants from the worksite to enter the stream or damage the stream habitat shall be corrected immediately. When one-third of the capacity of any erosion control device has been reached, the device shall be cleaned out. Material removed from erosion control devices during maintenance shall be placed at least 200 feet from stream banks and in a manner that prevents the material from entering any streams. The Service and GDNR should be notified immediately in the event of an erosion control failure.

12. The USFS shall notify the Service and GDNR immediately in the event of an erosion control failure that allows discharge of sediment into the stream. Modifications shall be made in the implementation of the Erosion and Sedimentation Control Plan to correct any circumstances that may cause or allow pollutants (including sediment) from the worksite to enter the stream.

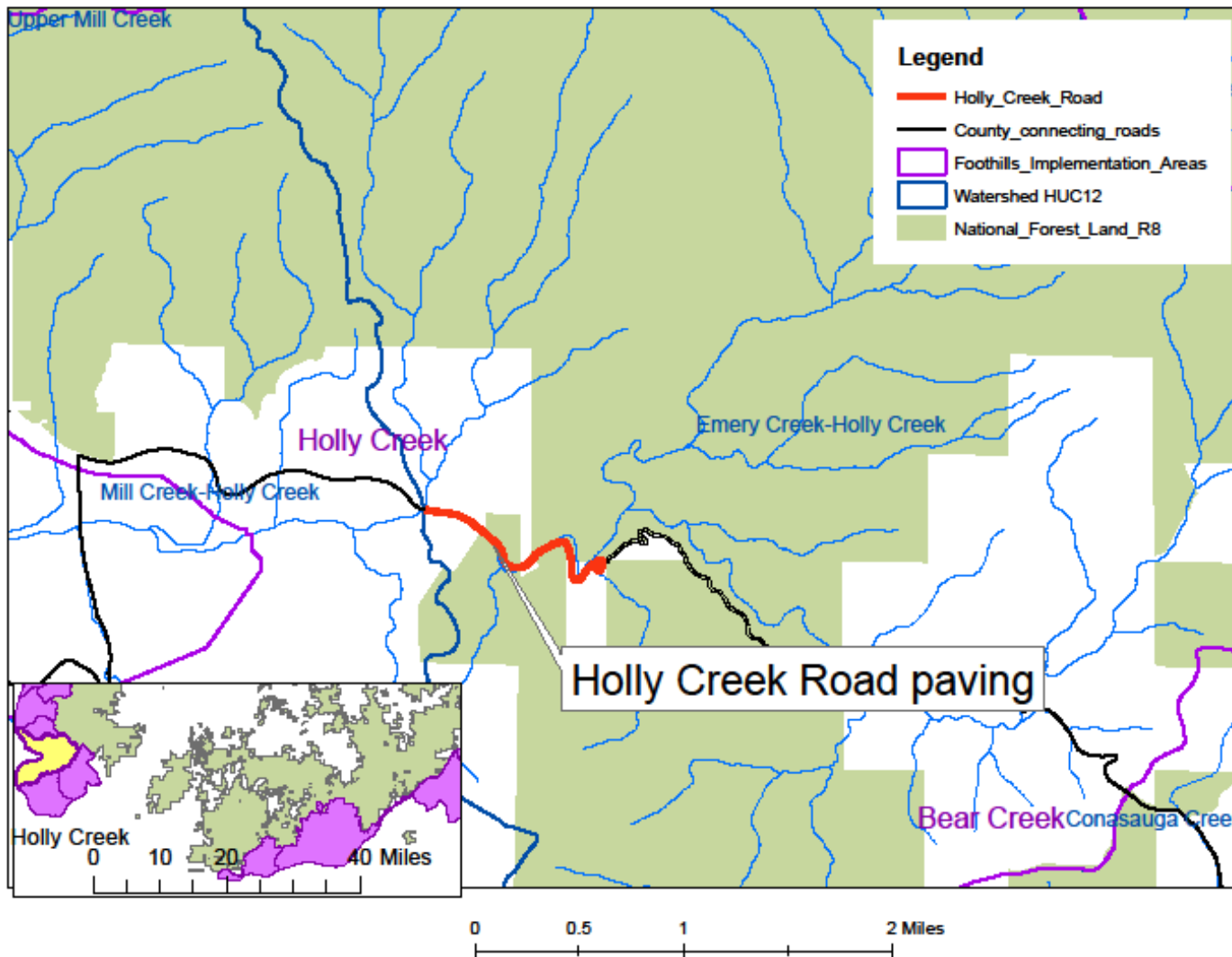
13. The USFS shall conduct daily monitoring up to 200 feet downstream of construction activities during in-water work. Any dead fishes observed within this area shall be collected and kept on ice for positive identification. Death or harm to blue shiners shall be reported to the Service and GDNR immediately.

14. A log shall be kept detailing any incidents outlined above that could cause injury to the blue shiner in or adjacent to the project through completion of the project. Following project completion, the log and a report summarizing any incidents involving these species shall be submitted to the Service and GDNR.

15. If practicable, the roadway should be super-elevated to allow for stormwater redirection from the north side of the roadway into corrected ditches and through cross drains.

16. All costs pertaining to any requirement contained herein shall be included in the overall bid submitted unless such requirement is designated as a Separate Pay Item in the proposal.

Foothills Landscape Project - Holly Creek Road Paving Conasauga Ranger District - Chattahoochee-Oconee National Forest



Attachment A: Additional Project Design Features

PDF Number: Location or Condition	Project Design Features, Best Management Practices, and Standards	Origin
<p>PDF 1: All Restoration Actions that Use Herbicides</p>	No herbicide is ground applied within 100 feet of lakes, wetlands, streams, except for aquatic-labeled herbicides to prevent significant environmental damage	Forest Plan Standard FW-022
	Herbicide mixing, loading, or cleaning areas in the field are not located in sensitive areas as identified in the project decision document, or within 200 feet of private land, open water, or wells (or ephemeral streams FW-024)	Forest Plan Standard FW-023
	No soil active herbicide with a half-life longer than three months is broadcast within 25 feet of ephemeral streams. Selective treatments with aquatic-labeled herbicides are allowed. Such areas are clearly marked before treatment so that applicators can easily see and avoid them.	Forest Plan Standard FW-025
	Site-specific analysis of proposed management actions will identify any protective measures needed in addition to Forest Plan standards, including increasing the width of protective buffers where needed.	Forest Plan Standard FW-029
	Milkweed species would be avoided during herbicide spraying.	FLP Specific
	Pesticide Use – See Appendix B, Attachment 1 of the Vegetation Specialist Report	FLP Specific
<p>PDF 2: Old growth stands, at the time of implementation, that meet minimum age criteria for old-growth based on Old-Growth Type</p>	Non-conserved “possible old-growth”, defined as stands meeting the minimum age criteria for their respective Old-Growth Type that are not currently conserved by Management Prescription or through small block allocations associated with this alternative, would be assessed prior to implementation of project activities within these areas to determine if they meet the other defining criteria for old-growth conservation. If so, these areas would be conserved for old-growth. Management actions that conflict with old-growth characteristics, as described by the Forest Plan, would not be permitted in areas conserved. The exception would be for Old-Growth Types 22 and 24.	Forest Plan Standard (FWS – 046 FWS – 054)
<p>PDF 3: All vegetation management actions in all conditions</p>	During all vegetation management activities, dogwoods and other soft-mast producers would be reserved from treatment, where practicable and to the extent compatible with meeting treatment objectives	Forest Plan Standard (FWS – 008) and FLP Specific
<p>PDF 4: All vegetation treatments that include Oak regeneration (2,000 acres) or mesic hardwood regeneration (500 acres) treatments</p>	Oak-dominated forest types on mesic sites would not be converted to pine-dominated cover types, but could be managed as mixed oak-pine forest types	Forest Plan Standard (FWS – 004)
	For areas proposed for mesic hardwood regeneration to create young forest habitats, regeneration treatments would be limited to yellow poplar-dominated stands or stands dominated by other non-oak cover hardwood associates. This would include Forest Types 50, 56, 58 and/or 41.	FLP Specific
<p>PDF 5: All vegetation treatments that include regeneration harvests (yellow pine restoration, oak restoration, oak regeneration, mesic hardwood regeneration)</p>	When regeneration treatments are applied, sites would be regenerated to native tree species that commonly occur or historically occurred naturally on ecologically comparable sites within the same ecological section.	Forest Plan Standard (FWS – 001)
	Stands dominated by Eastern hemlock would not be subject to regeneration treatments.	Forest Plan Standard (FWS – 002)
	Even-aged or two-aged regeneration areas in or adjacent to deciduous or mixed forests must include a 50-foot zone along mature forest edges in which intensity of silvicultural treatment decreases, resulting in a feathered edge.	Forest Plan Standard (FWS – 007)

PDF Number: Location or Condition	Project Design Features, Best Management Practices, and Standards	Origin
	The maximum size of an opening created by even-aged or two-aged regeneration treatments is 40 acres. For yellow pine, 80 acres is permitted if restoration requires larger openings.	Forest Plan Standard (FWS – 086)
	Openings created by even-aged regeneration or two-aged regenerations harvest units shall be separated from each other by a minimum of 330 feet (5 chains). However, such openings may be clustered closer than 330 feet as long as their combined acreage does not exceed the maximum opening size (40 acres). An opening created by regeneration harvest would no longer be considered an opening when the re-established stand reaches five years in age.	Forest Plan Standard (FWS – 087)
	Regenerated stands shall meet the minimum stocking standards for the intended/desired forest type within five years after final harvest cut, as listed in the Forest Plan Table 2-5.	Forest Plan Standard (FWS – 089)
	<p>In even-aged and two-aged regeneration, retain all snags unless they are an immediate hazard.</p> <p>Sales would be designed to avoid snag removal if possible (skid trails, landings). Retain (or create) five snags per acre: near the forest edge if possible.</p> <p>In even-aged and two-aged regeneration stands larger than 10 acres, maintain a minimum of 15 sq. feet of basal area. These could be arranged in clumps, corridors, or feathered edges. In stands over 10 acres treated as seed tree or shelterwood, maintain a minimum of 20 sq. feet of basal area. Retain all trees within 20 feet of five snags per acre for windthrow protection and snag recruitment</p>	Forest Plan Standard (FWS 091).
PDF 6: All Prescribed Fire in all Conditions	<p>When necessary, to include mesic deciduous forests within prescribed burning blocks as part of burning other adjacent fire-dependent forest types, only low intensity fires are permitted, except when prescribed burns are designed to encourage oak regeneration in mesic oak forests.</p> <p>Exclude such mesic areas lacking a significant oak component from burn units, unless by doing so, it would result in: (1) failure to meet other prescribed fire objectives, or (2) more than 30% increase in plowed or bladed fire-line construction per burn unit.</p>	Forest Plan Standard (FWS – 191 and FSW – 0190)
PDF 7: All mechanical vegetation management	Skidding would not occur within riparian corridors, except for at designated crossings.	GA BMP
	No heavy equipment, other than mechanical fellers, would be allowed to operate within the riparian corridors during harvest activities. The exception to this would be at designated crossings.	GA BMP
	Once the temporary roads, log landings, and skid trails are no longer needed, they would be closed to normal vehicle traffic so that illegal use is discouraged. The closures may include installation of an earthen barrier, re-contouring, decompaction, placement of logging debris along the road surface, seeding or placement of boulders.	FLP Specific
	Log landings and skid trail locations would be evaluated and approved by the Forest Service prior to harvesting in order to ensure that they are placed in locations with adequate drainage and away from sensitive soils or riparian areas as per the Georgia State BMP recommendations.	FLP Specific
	Skidding and decking would be limited to designated and approved routes along ridges and gentle slopes to protect sensitive soils. Skidding would not be allowed on sustained slopes over 35%. Coordination will be completed when skid trails and decking coincide with system trails.	FLP Specific

PDF Number: Location or Condition	Project Design Features, Best Management Practices, and Standards	Origin
	No tree removal may occur within 0.25 mile of a known NLEB hibernaculum at any time of the year (NLEB 4d rule) unless agreed to during consultation with U.S. Fish & Wildlife Service	FLP Specific (ESA Consultation)
	No tree removal may occur within a 150-foot radius of known, occupied NLEB roost trees during June or July each year (NLEB 4d rule) unless agreed to during consultation with U.S. Fish & Wildlife Service	FLP Specific (ESA Consultation)
	Protect known Indiana bat or other endangered bat roosts from cutting or modification until they are no longer suitable as roost trees.	Forest Plan Standard FW-233
	Snags are not intentionally felled from April 1 through August 31 (exceptions may be made for safety, insects, and disease).	Forest Plan Standard FW-235
	Non-silvicultural projects removing trees or snags (fireline construction, rec projects, hazard tree removal) should be completed during September 1-March 31. This applies to the parts of the forest that provides "suitable" habitat for Indiana bat roosting (GIS analysis).	Forest Plan Standard FW-236
	In all silvicultural treatments, retention priority is given to the largest available trees with favorable characteristics as bat roost trees (yellow pines and oaks with crevices, cracks, or hollows).	Forest Plan Standard FW-237
	Compliance with standards FW-90, 91, 233-237 will be monitored and report submitted annually to USFWS. Report will include acres of timber harvest and prescribed burning; time of year accomplished.	Forest Plan Standard FW-238
	Mature forest cover is maintained within 100 feet from the top of cliffs and 200 feet from the base of cliffs.	Forest Plan Management Prescription 9.F-017
	Vegetation management activities would not utilize existing trails as access routes without a review by recreation staff. Trails used would be restored to the original trail width and characteristics if determined appropriate per sustainable recreation objectives. Blaze trees that define the trail corridor would not be cut unless to mitigate safety concerns.	FLP Specific
	Layout of regeneration areas would incorporate a no-harvest zone between unit boundaries and open Forest system roads that have a HIGH scenic integrity objective.	FLP Specific
	Layout of regeneration areas by design would leave areas un-harvested along prominent ridgelines and/or sites of higher elevation that have a HIGH or MODERATE scenic integrity objectives to reduce "sky-lighting" effects and to obscure areas of lower elevation in regeneration.	FLP Specific
	Logging equipment must be inspected and found to be clean (free of vegetative debris) seed, soils, etc. upon arrival to timber sale areas.	FLP Specific
	Known NNIS infestations must be shown on timber sale area maps. Ensure that equipment washing clauses are included in all ground-disturbing contracts and sales documents, and that clauses are discussed in pre-work conferences.	FLP Specific
	When possible, significant infestations of NNIS along planned access routes would be pre-treated systematically within timber sale areas in order to prevent the spread of NNIS into new areas.	FLP Specific
	Skidding through known populations of NNIS should be avoided to reduce the potential for spread.	FLP Specific
PDF 8: All mechanical vegetation and prescribed fire treatments	Coordinate with district recreation staff to post advance notices when trails or recreation sites are to be closed during harvest operations and prescribed burning.	FLP Specific
	Trails treads, roads, or facilities would be rehabilitated to pre-existing condition if damaged during project operations, in coordination with district recreation staff.	FLP Specific

PDF Number: Location or Condition	Project Design Features, Best Management Practices, and Standards	Origin
	Vegetation treatments that occur within or adjacent to developed sites, dispersed sites, or trails would be coordinated with local recreation /facility staff to protect facility and lessen impacts to visitors to the extent possible. Project activities that occur within or adjacent to developed sites, dispersed sites, or trails would be conducted outside the major use season whenever possible, with the understanding that most facilities are open year-round. Developed sites will be temporarily closed for visitor protection during active operations. Portions of sites and trails may be temporarily closed for visitor protection or possible restrictions placed on silvicultural activities during times of high use.	FLP Specific
	Where possible, while implementing proposed treatments, make improvements within recreation sites and along system trails. Examples include cleaning up logs and debris from past projects, removing hazard trees surrounding developed sites, and/or cutting existing stumps to less than six inches.	FLP Specific
	Harvest facilities such as temporary roads and landings, and fireline construction will be assessed for continued use to meet other resource needs (i.e., additional trailhead parking, loop trails, wildlife openings, etc.)	FLP Specific
PDF 9: Prescribed Fire Treatments in all Conditions	Minimize the amount and concentration of smoke entering populated areas; prevent/minimize public health and safety hazards, including impacts to sensitive sites (schools, hospitals, etc.), visual impacts on highways, airports, etc. (both day and night); avoid exceedances of the National Ambient Air Quality Standards (NAAQS); and protect visibility in Class 1 areas	USDA Forest Service Southern Region's Smoke Management Guidelines
	All activities will meet the requirements of applicable regulations established in pursuit of state or federal air quality goals. While the Forest Service cannot unilaterally guarantee the quality of air (generally, or at a specific point) within an airshed, it does ensure that its management activities would be conducted with full adherence to pollution control methodologies and technologies prescribed by air quality regulatory agencies.	Forest Plan Standard FW-230
	In leases and other agreements that permit other parties to use Forest land or resources, the Forest Service will require the permittee to meet the requirements of all applicable regulations established in pursuit of state or federal air quality goals.	Forest Plan Standard FW-231
	The Forest Service will assess relevant aspects of air quality within the Forest, either through its own efforts, in cooperation with other agencies, or by review of the results of other agency monitoring in/near the Forest.	Forest Plan Standard FW-232
	Adhere to Forest Service Manual 5100 Wildland Fire Management, Chapter 5140 Hazardous Fuel Management and Prescribed Fire, Chattahoochee-Oconee Supplement, as amended, regarding parameters to consider when developing a prescribed fire burn plan. Parameters include, but are not limited to: fuel moisture, relative humidity, wind speeds, Keetch-Byram Drought Index (KBDI), days since rain, temperatures, and probability of ignition.	Forest Service Manual 5100 Wildland Fire Management, Chapter 5140 Hazardous Fuel Management and Prescribed Fire, Chattahoochee-Oconee Supplement R8-5100-2009-1
	Basic mesic forests are excluded from prescribed burning blocks where this can be accomplished without large increases in fireline construction. When necessary, to include mesic deciduous forests within burning blocks, direct firing will not be done within these communities unless necessary to secure control lines. In these cases, only low intensity fires are allowed.	Forest Plan Management Prescription 9.F-016
	Locate and construct firelines to minimize mineral soil exposure by utilizing natural barriers, installing firebreaks along the contour, installing proper water diversions, and using gradual grades as outlined in the Forest Plan and Georgia's BMP Handbook. Establish a vegetative	GA BMP

PDF Number: Location or Condition	Project Design Features, Best Management Practices, and Standards	Origin
	<p>cover as soon as possible to reduce erosion and sedimentation.</p> <p>Prescribed burn plans written for areas near caves or mines that contain bats identify these sites as smoke sensitive targets and plan to avoid smoke entering cave or mine openings when bats are present.</p>	Forest Plan Standard FW-034
<p>PDF 10: All activities within Ephemeral Zones (the area within 25 feet on either side of ephemeral streams)</p>	<p>Implement current Georgia Rules and Regulations for Water Quality Control (Chapter 391-3-6) for all projects as a minimum to meet water quality objectives. GA BMPs for Forestry would be met or exceeded to meet water quality objectives for all activities. Consistent with GA BMP (2019 p. 21), silvicultural activities should:</p> <ul style="list-style-type: none"> • Minimize soil disturbance, litter layer removal, and avoid high-intensity fire within ephemeral areas. These activities can increase the possibility of introducing pollutants to intermittent or perennial streams. • Cover inadvertently exposed soils with logging debris, grass, or mulch. • Minimize equipment trafficking within and around ephemeral areas. Should trafficking be justifiable due to site constraints, take precautions to minimize soil disturbance and litter layer removal. Placement of logging debris or logging mats in traffic areas may be appropriate. Debris, mats, and other soil protecting structures should not interfere with the natural flow of water. • Avoid direct tie-in of turnouts and outfall of water bars/breaks to ephemeral areas. Extra care should be taken where a skid trail crosses an ephemeral area. 	Forest Plan Standard FW-070, GA BMPs
	<p>Motorized vehicle use in ephemeral stream zones is restricted to designated crossings. Motorized vehicles are allowed outside designated crossings on a case-by case basis when vehicle entry would create less ground disturbance than cable winching.</p>	Forest Plan Standard FW-077
	<p>Partial suspension is required when yarding logs over ephemeral streams, unless an improved crossing is used, e.g., culvert or bridge.</p>	Forest Plan Standard FW-079
	<p>Temporary culverts or bridges will be used to cross ephemeral streams where needed to protect channel stability or minimize erosion or scouring. Culverts will be removed when activities are completed, and the ephemeral stream zone will be restored to a natural condition. Stabilize disturbed soils at crossings.</p>	Forest Plan Standard FW-082
	<p>Recreation trails, campsites, and other permanent recreational developments are located, designed, and constructed outside the ephemeral stream zone (25 feet on each side). Those causing unacceptable resource damage will be closed and/or rehabilitated.</p>	Forest Plan Standard FW-083
	<p>Use fuel-break construction and/or mitigation methods that: (a) leave the root mat intact; (b) do not leave bare mineral soil exposed, and © do not create landforms that will drain directly into ephemeral streams for 25 feet on either side of ephemeral streams. Such methods include wet lines or use of existing constructed or natural barriers. If fuel-break construction results in breaking the root mat and thus exposure of bare mineral soil and connection to an ephemeral stream, restore the fire break for 25 feet on each side of the stream with re-shaping the soil surface and placing a soil cover in a timely manner to minimize erosion.</p>	Forest Plan Standard FW-084
<p>PDF 11: All heavy mechanical equipment use in parking lot activities</p>	<p>Operators should drive, operate, and store heavy equipment only within the proposed development footprint or the disturbed corridors of the surrounding roads and parking areas, so as to limit soil compaction and vegetation cover loss in the surrounding area. Additionally, bulldozer debris and excavated material from grading and digging operations should not be pushed into the surrounding natural forest areas. Construction should be designed and completed with no additional impacts to the riparian area.</p>	FLP Specific
<p>PDF 12: All heavy mechanical</p>	<p>Soil rutting should be kept to a minimum.</p>	Regional soil standard

PDF Number: Location or Condition	Project Design Features, Best Management Practices, and Standards	Origin
equipment uses	Compaction in an activity area should not exceed a 15% increase in bulk density in the upper 8 inches of the soil.	Regional soil standard
PDF 13: Mastication activities	The operator should try to move in a straight direction. Pivot turns should be kept to a minimum and turns should be conducted in a broad arc as the surrounding terrain and timber would allow in order to minimize soil disturbance. Care should be taken to avoid moving over the same piece of ground more than three times or use areas that have already been compacted through other activities.	FLP Specific
PDF 14: Temporary road construction	Temporary roads would follow the general contour as practical and would generally not exceed sustained grades over 10%.	GA BMP
	The travel way of temporary roads would generally not exceed 14-16 feet except at turnouts and landings.	GA BMP
	Drainage structures, such as outsloping and waterbars, would be installed along temporary roads when the use of the road is no longer needed.	GA BMP
	Temporary roads would be constructed on previous existing routes (old woods roads, skid trails, system trails) where possible to minimize the need for new temporary road construction.	FLP Specific
PDF 15: Timber harvest activities within the riparian corridor	Establish Streamside Management Zones (SMZ) on both sides of designated trout streams and tributaries according to the following options: Option A: For perennial trout streams and tributaries, a minimum 100-foot SMZ that includes a no-harvest zone within the first 25-feet of primary or secondary trout streams. Timber harvests within the remaining 75-feet of the SMZ should leave an average of 50 square ft of basal area per acre or at least 50% canopy cover. Option B: For perennial trout streams and tributaries within the 100-ft. SMZ, leave an average of 50 square feet of basal area per acre evenly distributed throughout the zone to provide shade. Option B may be selected if a qualified professional is consulted. Option C does not apply to CONF. The minimum CONF riparian corridor is 100 feet.	GA BMP
PDF 16: All activities within Riparian Corridor	Major actions that create long-term impacts are prohibited in the riparian corridor. Examples are roads or trails (excluding designated crossings), recreation sites and facilities, log landings, and permanent wildlife openings. Existing examples of the above are permitted if not causing environmental damage.	Forest Plan Standard 11-001
	Minor actions that create short-term impacts are permitted in the riparian corridor with appropriate mitigation and monitoring of impacts. Examples of minor actions include silvicultural activities needed to meet resource objectives for riparian-associated species, bank stabilization, temporary road construction and stream crossings associated with these activities.	Forest Plan Standard 11-002
	For all projects, additional protection, such as wider riparian corridor distances, higher residual canopy cover, restrictions on activities, etc. will be identified through site-specific inventories and surveys, site-specific biological evaluations, and site-specific mitigations identified in project NEPA documents.	Forest Plan Standard 11-003
	Silvicultural activities conducted within the riparian corridor will be conducted to meet or exceed compliance with the current edition of GA BMPs for Forestry	Forest Plan Standard 11-022
	Tree removals may only take place (in the riparian corridor) if needed to enhance the recovery of the, rehabilitate disturbances, provide habitat for T&E, RFSS, or riparian-associated species, reduce fuel buildup, provide for visitor safety, or for approved facility	Forest Plan Standard 11-024

PDF Number: Location or Condition	Project Design Features, Best Management Practices, and Standards	Origin
<p>PDF 17: Culvert and/or bridge maintenance, removal, or modification</p>	<p>construction/renovation</p> <p>Culverts and bridges (and any other man-made structure) would be surveyed for roosting bats before they are removed or modified, and if significant bat roosting is found, the structure would be maintained, or alternative roosts made available prior to removal or destruction</p>	<p>Forest Plan Standard FW-035</p>
	<p>Culverts that are barriers to stream biota passage in waters of aquatic Threatened, Endangered, and Sensitive species have priority for replacement over culverts in waters without Threatened, Endangered, and Sensitive Species.</p>	<p>Forest Plan Standard FW-042</p>
<p>PDF 18: Timber sales</p>	<p>In salvage timber sales, all live den trees and an average of 5 of the largest suitable snags (snags with exfoliating bark) per acre will be retained. Snags in early stages of decay should be favored over older snags for retention. Snags should be clumped if possible.</p>	<p>Forest Plan Standard FW-090</p>
	<p>In even aged and two aged regeneration, retain all snags unless they are an immediate hazard. Sales will be designed to avoid snag removal if possible (skid trails, landings). Retain (or create) 5 snags per acre, near the forest edge if possible. In even-aged and two-aged regeneration stands larger than 10 acres, maintain a minimum of 15 sq. feet of basal area. These can be arranged in clumps, corridors, or feathered edges. In stands over 10 acres treated as seedtree or shelterwood, maintain a minimum of 20 sq. feet of basal area. Retain all trees within 20 feet of 5 snags per acre for windthrow protection and snag recruitment.</p>	<p>Forest Plan Standard FW-091</p>
<p>PDF 19: Activities around caves and/or mines</p>	<p>For caves and mines suitable of supporting cave-dependent species, a minimum buffer of 200 feet is maintained around portals. Prohibited activities within this buffer include use of wheeled or tractor vehicles (except on existing roads or for cave protection and maintenance), mechanical site prep, vegetation cutting, rec site construction, tractor-constructed firelines, herbicide application, and new road construction, skid trails, and log landings.</p>	<p>Forest Plan Management Prescription 9.F-021</p>
<p>PDF 20: All vegetation treatments that create young forest habitats (10,100 acres)</p>	<p>Within individual project areas to be implemented within the Foothills Landscape area, an assessment of existing acres of young forest habitats (stands less than 11 years old) would be made prior to implementation to determine the maximum amount of young forest that could be created. Such assessments would be tiered to the applicable Management Prescription allowances contained within each individual project IA. Young Forest habitats would not be created in excess of the maximum amounts allowed by each Management Prescription singly or combined.</p>	<p>FLP Specific (MRx compliance)</p>
<p>PDF 21: Any ground-disturbing activities</p>	<p>Botanical surveys would be completed in accordance with Forest risk assessments in suitable habitats for T&E and Sensitive species prior to any ground disturbing activities.</p>	<p>FLP Specific</p>

Attachment B: Monitoring Plan

Resource Assessed	Monitoring Question/Objective	Frequency	Field Method/Data Collection	Documentation Format	Primary Responsibility
Soil Productivity & Water Quality	Are Best Management Practices (BMPs) being implemented through timber sale contract provisions, and according to Forest Plan standards?	During operational periods (timber sales, site prep, road construction and maintenance)	Evaluate implementation of BMPs and timber sale contract provisions. All timber sale units are evaluated for implementation.	Timber sale inspection forms, filed in timber sale contracts, reviewed by FSR	District Timber Sale Administrator, Harvest Inspector, Forest Service Representative (FSR)
Soil Productivity & Water Quality	Are the Best Management Practices and applicable Forest Plan standards effective in meeting soil productivity and water quality standards?	During operational periods and within one year after operations end.	Field evaluation of the effectiveness of BMPs to meet Forest Plan standards. Random sample of harvest units using line transects & point samples	Field inspection forms, filed in S.O.	Interdisciplinary Team (Forest personnel in hydrology, soils, timber)
Best Management Practices Implementation – Audit by GFC	Were Best Management Practices implemented per Georgia’s Forestry BMP Handbook and effective in protecting water quality?	During operational periods and within one year after operations end.	Field evaluation of randomly selected harvest units and prescribed burns by Georgia Forestry Commission water quality personnel. This occurs across the state on federal land as well as state and private ownership.	Completion of GFC Best Management Practice Audit Form, filed in state database	Georgia Forestry Commission Water Quality personnel

Resource Assessed	Monitoring Question/Objective	Frequency	Field Method/Data Collection	Documentation Format	Primary Responsibility
Revegetation of Disturbed Areas	Were the prescribed revegetation efforts on disturbed sites such as skid trails, landings, skid trails, and fire lines implemented and effective in establishing ground cover and erosion protection?	Within one growing season of revegetation operations.	Visual evaluation of disturbed areas that have been revegetated to assess that sites have been seeded and rehabilitated to ensure revegetation is successful.	Field visual inspection of random sample of revegetated areas, documented on timber sale inspection reports	Timber Sale Administrator
Non-Native Invasive Plants	Are NNIS populations present within planned harvest/activity areas prior to treatment?	During project preparation/layout	Field inventory and mapping of NNIS populations	Inventoried populations will be mapped and treatment planned. Populations identified through risk assessment process prior to implementation may be added to Sale Area Map as required by Foothills NNIS Risk Assessment	District Silviculturist, District Timber Management Assistant (TMA), Presale Forester, District Wildlife Biologist
Non-Native Invasive Plants	Identify NNIS in treated areas as required by Foothills NNIS Risk Assessment and treat new infestations	Up to five field seasons after harvest activities have been completed as required by Foothills NNIS Risk Assessment	Field inspections to identify establishment or spread of NNIS as required by Foothills NNIS Risk Assessment	Inventoried populations will be mapped and treatment planned.	District Silviculturist, District TMA, District Wildlife Biologist
Rare Plants	Are rare plant protections adequate to protect populations?	During timber sale layout and operational periods	Field inspection of known rare plant populations.	Timber sale inspection reports	Timber Sale Administrator, District Wildlife Biologist

Resource Assessed	Monitoring Question/Objective	Frequency	Field Method/Data Collection	Documentation Format	Primary Responsibility
Timber	Are timber harvest activities adhering to applicable Forest Plan standards?	Throughout the life of the timber sale contract	Field inspections through all phases of harvesting to ensure contract provisions are being met and implemented in compliance with the Forest Plan.	Timber sale inspection reports	Harvest Inspector, Timber Sale Administrator, Forest Service Representative, District Wildlife Biologist, District Timber Management Assistant
Reforestation	Are harvested stands regenerated and restocked within five years of harvest?	One and three years after planting trees, and at 5 years or later after site preparation has been completed with natural regeneration	Field evaluation of sample plots and/or field inspection will be used to determine stocking, composition and condition of regeneration.	Report documented in FACTS database	District Silviculturist
Heritage	Are Forest Plan standards effective in protecting cultural and heritage resources?	During and immediately after harvest activities	Field inspections of sites to ensure the protection or avoidance of heritage resources.	Timber sale inspection reports	Timber Sale Administrator, Archeologist

Foothills Landscape Project – Pre-Implementation Process Guide and Compliance Checklist

This document will be used by Forest Service (FS) employees to implement the Foothills Landscape Project by tiering projects to the Programmatic Environmental Assessment and Final Decision (forthcoming). Following the process outlined below will:

- Demonstrate regulatory compliance with all overarching law, policy and regulation.
- Aid in determining when/if additional analysis under National Environmental Policy Act (NEPA) is warranted for any actions within a given Implementation Area (IA) of the Foothills Landscape.
- Ensure public engagement with stakeholders occurs throughout the lifecycle of the project.
- Provide planning consistency across FS units.
- Result in an Implementation Plan(s) that documents the locations and timing of management actions, applicable mitigations (project design features) and adheres to the Final Programmatic Decision Notice (DN). These implementation plans should provide adequate documentation required under NEPA for subsequent public scoping and if needed, tiered analyses and/or decisions.

Planning Steps:

Step 1: Forest Identifies all Management Opportunities within Implementation Area	1
Step 2. Complete Initial Field Reviews and Validate Thresholds for Proposed Action	2
Aquatics and Terrestrial Wildlife	2
Botanical and Rare Communities (T&E and Sensitive*, NNIS).....	6
Cultural Resources	8
Fire and Fuels	9
Soils and Hydrology	11
Recreation and Transportation/ Road System	12
Vegetation	14
IDT Leader or District Ranger	16
Step 3: Draft Implementation Plan and Initiate Surveys.....	18
Step 4: Present Draft Implementation Plan to Stakeholders (Foothills Collaborative Group).....	19
Step 5: Public Notice and Opportunity for Input	20
Step 6: Conduct Field Trip(s)/Educational Outreach.....	21
Step 7: Identify Additional Monitoring Needs.....	22
Step 8: Finalize Implementation Plan	23
Step 9: Submit for District Ranger Approval.....	24
Step 10: Conduct Contract Review (if applicable)	24
Foothills Landscape Project Implementation Plan	25
Plan Summary	25
Attachment A: Additional Project Design Features	36

Implementation Area: **Sarah's Creek**
Ranger District: **Chattooga River**

Step 1: Forest Identifies all Management Opportunities within Implementation Area

Instructions: District Interdisciplinary Teams (IDTs) will consult the [Environmental Assessment](#), [Decision Notice](#) and [Forest Plan](#) to identify potential project-level activities for the IA that are consistent with analysis and management direction.

- A. IDTs will identify the desired conditions throughout the IA by reviewing applicable management prescription (MRx) objectives and standards per the Forest Plan and characterization of current conditions based on existing data sets (i.e., FSVEG spatial, etc.) Examples include, but may not be limited to:
- What MRx are present? Suitable or unsuitable for timber production?
 - What sixth (6th) level watersheds are present? Watershed condition class? Percent Total Impervious Area (TIA)?
 - Scenic Integrity Objectives?
 - Known road or access issues? Illegal off-road problems?
 - Impaired streams, known sediment, or Aquatic Organism Passage (AOP) issues?
 - What vegetation treatment opportunities are present (GIS queries)?
 - What successional conditions are present? How many acres of young forest could be created?
 - Do some stands meet minimum old growth age? Does the IA need old growth small blocks?
 - Known recreation or trail issues/ concerns?
- B. IDT will review proposed actions (EA – Table 17 & Appendix B) and select all appropriate management actions available and needed to achieve desired conditions within the IA, noting which are identified for implementation directly from programmatic DN versus those requiring further review.

Throughout the implementation planning process, if at any point the IDT discovers/ determines an action is needed or a condition exists that was not accounted for in the analysis, additional disclosure and NEPA would be triggered.

Summary of proposed actions covered in this Implementation Guide

Activity Name (should correspond w/ Table 17 of EA)	Location (i.e., HUC, Compartment Stand, and or Geographic Description)	Draft Acres and/or miles of road/trails, etc.	Final Acres and /or miles of road/trails, etc.	Anticipated year(s) implementation would begin
Develop- and maintain sustainable recreation within the WSR corridor – Earls Ford	Sarah’s Creek Watershed (HUC 030601020206), on NFS system lands located within the Chattooga River WSR corridor.	1.0 acre		2023/2024

Step 2. Complete Initial Field Reviews and Validate Thresholds for Proposed Action

Instructions: Specialists should review the IA and complete their relevant checklist below. Information and documentation, if needed, should be included with this document. Once review is complete, and all specialists have signed, move to Step 3.

NOTE: It is the responsibility of the FS resource specialists to ensure **a)** the applicable steps below are followed, **b)** findings are communicated to IDT/ Line Officer, and **c)** resulting information is carried through accordingly and documented in the draft Implementation Plan for the IA.

Some of the following procedures may be repeated as planning evolves or deferred until sufficient information becomes available and it is prudent.

Aquatics and Terrestrial Wildlife

Review existing data to determine known locations of Threatened and Endangered (T&E) species, designated critical habitats, Regional Forester’s Sensitive Species, or locally rare species (i.e., consult Georgia Department of Natural Resources (DNR) spatial database (DNR-WCS) on AGOL, FS GIS shapefiles and other applicable records.). As part of the above process and specific to Terrestrial Wildlife, also:

- Consult with Georgia DNR for current range information for all federally listed bats to determine applicability of Forest Plan standards at:
<https://georgiawildlife.com/BatSurveyGuidance>
- Review current spatial extent of suitable Indiana bat roosting/ maternity habitat in IA.
- Consult with Georgia DNR to verify current information about known roost trees or hibernacula for NLEB (northern long-eared bat) in IA.

Obtain updated official species list from IPaC (Information for Planning and Consultation) for the project area at: <https://ipac.ecosphere.fws.gov/>. If new species are listed and present in IA and could be affected by the proposed action, consult with US Fish and Wildlife Service (USFWS)/ supplement NEPA accordingly.

List Date IPaC pulled: 6/27/2023

Identify potential AOP opportunities (in conjunction with Forest Soil Scientist and Engineer).

➤ **FLP Specific:** *When increasing aquatic connectivity by removing barriers to aquatic organism passage, it should be noted that some barriers are beneficial in preventing encroachment of non-native species or movement of native species. The potential for negative consequences of removing a barrier should be evaluated on a case-by-case basis.*

Identify known issues that are contributing to decreased habitat quality (i.e., sediment sources, riparian function, increased water temperatures, etc.).

**Foothills Landscape Project
Pre-Implementation Process Guide and Checklist**

- ☒ Review existing data to determine presence or potential of priority wildlife species such as migratory songbirds, game species (i.e., consult DNR-WRD, Game Management, Region 8 bird records).
- ☒ Consider opportunity or need for wildlife habitat improvement, especially in conjunction with commercial vegetation treatments such as:
 - Permanent openings acres in the project area. Consider creation or expansion (could create up to 1% of NFS acres per 6th level HUC).
 - Opportunities for daylighting selected system roads.
 - Opportunities for pollinator habitat improvement.
- ☒ The project design must comply with the following project design features:
 - **Forest Plan Standard FW- 009:** *Known black bear den sites will be protected from disturbance by a buffer of a minimum of 100 feet.*
 - **Forest Plan Standard FW- 010:** *Potential bear den trees (greater than 20-inch diameter at breast height (dbh), hollow with broken tops) will be retained.*
 - **FLP Specific:** *Within individual project areas to be implemented within the Foothills Landscape area, an assessment of existing acres of permanent openings would be completed prior to implementation to determine the maximum allowable acreage of new openings (up to 1% of the National Forest acreage in each 6th level watershed). Permanent openings would be managed as traditional grass/forb (food plots), shrub, native grass/forb, or pollinator habitat as appropriate for the site.*
 - **FLP Specific:** *When feasible, native plants that support pollinators would be planted on the forest where appropriate i.e., including logging decks, wildlife openings, powerline, and road rights-of- way. This would specifically include planting milkweed for monarch butterflies. (Work with interested non-profits and organizations to determine the correct plants to consider and the proper locations to conserve and enhance the pollinator habitat across the landscape.)*
 -
- ☒ If relevant, use space below to list additional survey needs or pertinent information to include in Implementation Plan (i.e., consideration of thresholds for annual reporting of activities affecting endangered bat habitat per Forest Plan standard FW-238, Large Woody Debris opportunities, roads w/in 300' of impaired streams present, etc.):

This project is located within the range of gray and northern long-eared bat per Georgia DNR current survey guidance. All Forest Plan standards for bat conservation apply. New information regarding the listing status of the northern long-eared bat and tricolored bat is found on page 7 of this document.

T&E mussels do occur within the Chattooga River, but known habitat occurs more than a mile downstream of the project location.

Foothills Landscape Project
Pre-Implementation Process Guide and Checklist

Maps and visual aids have been attached. Level of detail should be sufficient to allow for adequate planning and identification of issues and concerns.

Please select one of the statements below:

All activities shown in the draft plan have been reviewed for compliance with the Foothills Landscape EA or other relevant NEPA compliance and my resource. There are no changed conditions at the time of this review.

OR

All activities shown in the draft plan have been reviewed for compliance with the Foothills Landscape EA or other relevant NEPA compliance and my resource. There are changed conditions or specific actions that are not in compliance. These conditions or actions are listed below.

Foothills Landscape Project Pre-Implementation Process Guide and Checklist

A new IPaC list for the Earl's Ford project was requested and received from the US Fish and Wildlife Service on 6/27/2023; one additional wildlife species has been added since the original Foothills Landscape Project list was obtained in April 2021 for consideration in the project's Biological Assessment and NEPA analysis:

Monarch butterfly (*Danaus plexippus*) is now a candidate for listing as threatened or endangered, but there are no requirements for consultation under Section 7 of the ESA for candidate species. There are voluntary conservation measures which could be undertaken; many of these are included in the Foothills Landscape Project's proposed action (avoiding milkweed during herbicide treatments, prescribed burning on a 3–5-year rotation, planting milkweed and native nectar-producing plants where possible, midstory control when thinning pine stands, creating or expanding permanent openings). The effects of the project on monarch butterfly were considered and disclosed in the Terrestrial Wildlife Report, Biological Evaluation, and summarized in the Environmental Assessment because the species is a Regional Forester's Sensitive Species (RFSS). This new information does not require any further review or NEPA analysis or consultation. This project should have no impacts on this species; however, **it may impact individual monarch butterflies but is not likely to cause a loss of viability or a trend toward federal listing.** This is consistent with the findings in the Programmatic EA and Biological Evaluation.

Bat species reclassified as endangered or proposed for listing as endangered:

The effects of the FLP on northern long-eared bat (NLEB) were considered and disclosed in the Foothills Programmatic EA and Biological Assessment, but a change in status from threatened with a 4(d) rule to endangered constitutes new information to consider. The proposed project falls more than 3 miles from existing known hibernaculum. There are no known maternity or roost trees within the project area. On November 30, 2022, the Service published a final rule reclassifying the NLEB as endangered under the ESA (87 FR 73488). The 4(d) rule was rendered obsolete on March 31, 2023, which was the effective date of the final rule (88 FR 4908, January 26, 2023), as 4(d) rules only apply to threatened species. In anticipation of this reclassification, Forest Service Regions 8 and 9 initiated formal consultation with the FWS regarding this species and ongoing projects and previously signed decisions including the Foothills Landscape Project. This formal consultation was completed on 3/31/23 resulting in a Biological Opinion (BO) and incidental take statement (ITS) covering the impacts of this and other projects. This project would comply with the BO. This project **May Affect, Is Likely to Adversely Affect** this species; however, there are no effects beyond those covered in the ongoing formal consultation process. The BO and ITS will ensure the continued compliance of the Foothills Landscape Project with section 7(a)(2) of the Endangered Species Act until the new *Bat Conservation Strategy for Four Species Affected by White-nose Syndrome on Eastern National Forests* (BCS) is finalized. This document includes conservation measures for tricolored bat, Indiana bat, northern long-eared bat, and little brown bat.

On September 13, 2022, the USFWS proposed to list the tricolored bat as endangered. The effects of the FLP on tricolored bats were considered and disclosed in the Foothills Programmatic EA and Biological Evaluation because the species is on the Regional Forester's Sensitive Species (RFSS) list; it was determined that this project **may impact individuals but is not likely to affect viability or lead to federal listing of the species.** The proposed listing triggers the need for *conference* with the USFWS or *consultation* once listing is finalized, therefore this project is currently in compliance with ESA regarding this species. It is expected that the listing will be finalized in late summer 2023 and that formal consultation to cover this and other existing projects regarding tricolored bat will be completed prior to final listing. Finally, the above referenced BCS is currently in draft form and will include protective measures for tricolored bat and three other species. This project will comply with that strategy and resulting BO and incidental take statement. The determination of effect would be that the project **May Affect, Is Likely to Adversely Affect** this species, but compliance with the anticipated BO and incidental take statement would satisfy the Forest Service's responsibilities under Section 7(a)(2) of the Endangered Species Act.

Considering these changed conditions or information and the existing analysis, this project **remains in compliance** with the Programmatic Environmental Assessment and the requirements set forth under NEPA, ESA, and other applicable laws, regulations, and policies.

Foothills Landscape Project
Pre-Implementation Process Guide and Checklist

Signature David Vinson
 Biologist

Botanical and Rare Communities (T&E and Sensitive*, NNIS)

Review existing data to determine known locations of T&E species, designated critical habitats, Regional Forester’s Sensitive species, or locally rare species (i.e., consult DNR – WCS spatial database on AGOL, FS GIS shapefiles and other records).

Obtain updated official species list from IPaC for the project area at: <https://ipac.ecosphere.fws.gov/>. If new species are listed and present in IA and could be affected by the proposed action, consult with USFWS/ supplement NEPA accordingly.

List Date IPaC pulled: 6/27/2023

Review existing data to determine known locations of rare communities (i.e., bogs, caves, rock outcrops).

Review existing data to determine known locations of Non-native Invasive Species (NNIS); If needed, utilize risk assessment and conduct botanical surveys and NNIS assessment to determine if individuals or populations occur once activity locations are known.

Communicate known site locations to IDT for avoidance (i.e., protected information for internal planning purposes only).

The project design must comply with the following project design features:

➤ ***FLP Specific:*** *Known populations of T&E, Sensitive and LR plants would be protected by placement of a buffer zone around them where possible. The appropriate measures would be determined in coordination with U.S. Fish and Wildlife Service and Georgia Department of Natural Resources.*

If relevant, use space below to list additional survey needs or pertinent information to include in the Implementation Plan (i.e. additional opportunities for unique habitat work):

**Foothills Landscape Project
Pre-Implementation Process Guide and Checklist**

Ground disturbing activities associated with this project would be limited to those areas of pre-existing disturbed areas, where user created campsites, trails, and motorized vehicle use have created resulted in unsuitable habitat for desired native botanical resources. If implemented, this project would result in restoring favorable growing conditions for native plant species, through eliminating the use of motorized vehicles outside of the Earls Ford Road prism, and decompaction of soils within approximately 1.0 acres of lands within the WSR Corridor.

Botanical surveys will be completed prior to any new soil disturbance outside of the existing disturbed site and Earls Ford Road prism. Regional Forester Sensitive Species Fraser's Loosetrife occurs in the general area but has not been found at this site location.

The new IPaC list for the Foothills Project Area was requested and received from the US Fish and Wildlife Service on 06/27/23. No additional species were added since the list was obtained in April 2021 for consideration in the project's Biological Assessment and NEPA analysis.

- Maps and visual aids have been attached. Level of detail should be sufficient to allow for adequate planning and identification of issues and concerns.

Please select one of the statements below:

- All activities shown in the draft plan have been reviewed for compliance with the Foothills Landscape EA or other relevant NEPA compliance and my resource. There are no changed conditions at the time of this review.

OR

- All activities shown in the draft plan have been reviewed for compliance with the Foothills Landscape EA or other relevant NEPA compliance and my resource. There are changed conditions or specific actions that are not in compliance. These conditions or actions are listed below.

Signature David Vinson
Biologist

Cultural Resources

- Archaeologist gathers relevant cultural resources data for IA, determines maximum survey needed, and notifies tribes and Georgia State Historical Preservation Office (SHPO) of proposed undertakings and cultural resources work. Tribes/SHPO have 45 days to review.
- Archaeologist gathers relevant cultural resources and plant species data and provide to tribes for 60-day sacred site review. **Once consultation completed, begin surveys and required mitigations.**
- Communicate known site locations to IDT for avoidance (i.e., protected information for internal planning purposes only).
- The project design must comply with the following project design features:
 - **FLP Specific:** *Cultural Resources sites with an eligible or undetermined National Register of Historic Places status will be avoided and protected from project effects. The standard avoidance method will consist of a 100-foot protective buffer around each site, or as determined through consultation with the Georgia State Historic Preservation Officer and interested Tribes.*
 - **Forest Plan Standard FW- 208:** *Manage heritage resources in accordance with applicable federal laws, regulations, policy, agreements, and in the public interest. Emphasize the protection of significant heritage properties, completion of the forest wide inventory, and assessment of the significance of inventoried properties. Identify opportunities for appropriate use and interpretation of heritage properties.*
 - **Forest Plan Standard FW- 211:** *Consult with Heritage specialists in the planning stages of projects involving ground disturbance, diminished jurisdiction, or increased public use of, or access to, an area.*
 - **Forest Plan Standard FW- 212:** *Responsible official will halt any project during ground disturbance activities if known or newly discovered heritage resources are encountered, regardless of whether the area has been previously disturbed, until the significance of the site has been determined by Forest heritage staff through coordination with consulting parties.*
 - **Forest Plan Standard FW- 214:** *Pursuant to 36 CFR 196.18, site locations are exempt from provisions of the Freedom of Information Act. Do not disclose site locations in documents available to the public, including heritage GIS data, unless agreed to by all parties, including Native American tribes as appropriate.*
 - **FLP Specific:** *All actions associated with the Foothills Landscape Project will follow the stipulations of the Foothills Programmatic Agreement.*
- If relevant, use space below to list additional survey needs or pertinent information to include in the Implementation Plan:

Phase I Cultural resource inventory of the area in 2022 identified a site potentially eligible for the National Register of Historic Places, which may be affected by proposed action. Phase II survey will occur in the fall of 2023 to complete a determination of eligibility and finding of effects (DOE/FOE). Consultation with SHPO and Tribal partners will follow early in calendar year 2024. Effects of proposed action are likely beneficial to cultural resources in the area; however, some disturbance may occur in rehabilitation areas. Will work with HPM to develop project specific design features.

Maps and visual aids have been attached. Level of detail should be sufficient to allow for adequate planning and identification of issues and concerns.

Please select one of the statements below:

All activities shown in the draft plan have been reviewed for compliance with the Foothills Landscape EA or other relevant NEPA compliance and my resource. There are no changed conditions at the time of this review.

OR

All activities shown in the draft plan have been reviewed for compliance with the Foothills Landscape EA or other relevant NEPA compliance and my resource. There are changed conditions or specific actions that are not in compliance. These conditions or actions are listed below.

Click or tap here to enter text.

Signature _____ Trent Skinner____
Archaeologist

Fire and Fuels

Identify the existing fire condition class (FCC) and opportunities/ needs for treatment (EA Appendix F: Table 45).

Identify any existing hazardous fuels and opportunities for treatment in WUI based on risk (EA Appendix F: Table 44).

**Foothills Landscape Project
Pre-Implementation Process Guide and Checklist**

- Identify existing Rx burn unit(s) present in the IA.
- Identify if new burn units need to be established. Consider the implementation needs for that new burn unit. For example, but not limited to:
 - Are natural barriers present?
 - Is dozer line needed? If so, resource concerns?
 - Other?

If relevant, use space below to list additional survey needs or pertinent information to include in the Implementation Plan:

The FCC within and surrounding the project area is primarily 2 or 3 with no known fire history. The 1-acre Earls Ford project is not within the WUI. This project is not within a current burn unit, and no units need to be established in conjunction with this action.

Maps and visual aids have been attached. Level of detail should be sufficient to allow for adequate planning and identification of issues and concerns.

Please select one of the statements below:

All activities shown in the draft plan have been reviewed for compliance with the Foothills Landscape EA or other relevant NEPA compliance and my resource. There are no changed conditions at the time of this review.

OR

All activities shown in the draft plan have been reviewed for compliance with the Foothills Landscape EA or other relevant NEPA compliance and my resource. There are changed conditions or specific actions that are not in compliance. These conditions or actions are listed below.

Signature _____ /s/ Amy McClave _____

Soils and Hydrology

- Check with Forest Soil Scientist/ Hydrologist to determine existing and projected Total Impervious Area (TIA) in each 6th level HUC (EA Table 48, Appendix F).
- **FLP Specific Project Design Feature:** *Watershed TIA should not exceed 10%. Impervious surfaces are those that prohibit the movement of water from the land surface into the underlying soil (ex. Roads, trails, and other compacted areas).*
- Identify current Watershed Condition Class and identify any Priority Watersheds (See Tables 6 and 7 in EA). If Priority Watersheds exist, work with Forest Soil Scientist and/or Hydrologist on Watershed Restoration Action Plan (WRAP).
- Identify Streamside Management Zones (SMZs), proper widths, and any prescriptions within the SMZ.
- Coordinate with Forest Soil Scientist to ensure past detrimental disturbance in combination with proposed treatment disturbance would not exceed 15% of the activity area. If 15% would be exceeded by the treatment, evaluate the area for soil restoration activities.
- Coordinate with Forest Soil Scientist to identify any sensitive soil types (see various hazards and ratings in soil report) and slopes greater than 35%.
- The project design must comply with the following project design features:
 - **Forest Plan Standard FW- 065:** *On all soils dedicated to maintaining forest cover, the organic layers, topsoil, and root mat will be left intact over at least 80% of an activity area.*
 - **Forest Plan Standard FW- 06:** *Water control structures necessary for the control of surface water movement resulting from soil disturbing activities will be constructed within 30 days of completion of the activity.*
- If relevant, use space below to list additional survey needs or pertinent information to include in Implementation Plan:

The project is located within the Sarah's Creek Watershed (HUC 030601020206) (also referred to as Lower Warwoman Creek) which has a watershed condition class of functioning at risk. This watershed is not identified as a priority watershed. The proposed activities would help reduce impervious area within the watershed.
- Maps and visual aids have been attached. Level of detail should be sufficient to allow for adequate planning and identification of issues and concerns.

Please select one of the statements below:

All activities shown in the draft plan have been reviewed for compliance with the Foothills Landscape EA or other relevant NEPA compliance and my resource. There are no changed conditions at the time of this review.

OR

All activities shown in the draft plan have been reviewed for compliance with the Foothills Landscape EA or other relevant NEPA compliance and my resource. There are changed conditions or specific actions that are not in compliance. These conditions or actions are listed below.

Click or tap here to enter text.

Signature _____ Taylor Hughes _____
Soil/Hydrology Specialist

Recreation and Transportation/ Road System

- Identify impacts to developed recreation, designated dispersed recreation, and trails from non-recreation actions.
- Identify road maintenance/ improvements needed to implement proposed activities.
- Verify data in INFRA and correct any discrepancies.
- Identify any roads from the EA with ML changes identified for maintenance level reduction or decommissioning.
- Identify opportunities to improve the condition of NFS roads. Coordinate with Silviculture, Soils and Engineering.
- The project design must comply with the following project design features:
 - **Forest Plan Standard FW- 129:** *During active projects, all roads, trails, ditches, and other improvements in the project area are kept free of logs, slash, and debris. Any road, ditch, or other improvement damaged by operations is promptly repaired.*

**Foothills Landscape Project
Pre-Implementation Process Guide and Checklist**

Identify the impacts to the recreation user (user experience, access, public health and safety) from both the recreation-specific actions and non-recreation actions and determine appropriate methods of notification and communication. For example, but not limited to:

- Are there any potential road closures that may impact access to recreation sites?
Seasonal or temporary closures?
- Prescribed burning or vegetation management that may cause closures?
- Smoke or equipment that may conflict with users?
- Are there any potential temporary trails closures that may impact recreation activities?

Identify Scenic Integrity Objectives (SIOs) and Recreation Opportunity Spectrums (ROS) for the IA and communicate with Silviculture, Soils and Engineering any concerns of not adhering to these management directions.

➤ **Forest Plan Standard FW- 097:** *The Forest SIO Maps and Tables in each prescription govern all new projects, including special uses. Assigned SIOs are consistent with ROS management direction. Existing conditions may not currently meet the assigned SIO.*

➤ **Forest Plan Standard FW- 102:** *Maintain consistency between adopted SIOs and ROS management direction (Standard FW-102, 2-29), including promptly rehabilitating firelines to appear natural in areas of High and Very High SIO (Standard 115, 2-30).*

Wild and Scenic River designation exists in the implementation area

Confirm presence of designated National Scenic, Historic or Recreation Trails. If present, coordinate appropriately.

If relevant, use the space below to list additional survey needs or pertinent information to include in Implementation Plan (i.e., other Recreation actions (including Categorical Exclusion level actions) occurring in the IA, anticipated public notices/ closure order needs specify):

The proposed activities to rehabilitate riparian habitats and eliminate ongoing illegal motor vehicle activities within the Chattooga River Wild and Scenic River (MRx: 2.A.1 Designated Wild River segment of the Chattooga River Wild & Scenic River) is consistent with the Foothills Landscape EA/DN. Scenic Integrity Objective (SIO) for lands within the project area is "Very High".

Compliance with the Wild and Scenic River Act will require completion of Section 7 Consultation prior to installation of structures meant to restrict vehicle from accessing NFS lands located adjacent to Earls Ford Road, and within the Stream Management Zones.

Earls Ford Road is a county road.

Maps and visual aids have been attached. Level of detail should be sufficient to allow for adequate planning and identification of issues and concerns.

Please select one of the statements below:

All activities shown in the draft plan have been reviewed for compliance with the Foothills Landscape EA or other relevant NEPA compliance and my resource. There are no changed conditions at the time of this review.

OR

All activities shown in the draft plan have been reviewed for compliance with the Foothills Landscape EA or other relevant NEPA compliance and my resource. There are changed conditions or specific actions that are not in compliance. These conditions or actions are listed below.

Signature Barb Ramey

Recreation Program Manager

Vegetation

Review/ collect stand exam data in accordance with current policy (forest health, species composition, stand age, basal area, etc.).

Determine existing acres of young forest habitat (0-10 years old) in the IA using aerial imagery, remote sensing data, and/or ground truthing.

Work through Foothills decision matrixes for stands being considered for silvicultural treatment.

Confirm stands are not identified for proposed old growth or forest plan designated Table 17 in EA.

Do hemlock treatments exist, and if so, are any in Inventoried Roadless Areas (IRAs)?

Review operational feasibility and access. This includes, but not limited to:

- Management Prescriptions

**Foothills Landscape Project
Pre-Implementation Process Guide and Checklist**

- Identify potential roads needed based on proposed action. Coordinate with Engineering on any needed improvements (culvert replacements, road widening, etc.)
- Temporary road construction anticipated. Coordinate with Soils, Engineering, Timber Sale Administrator, and other applicable resource areas
- Slopes

Determine connected actions (prescribed fire, herbicides, etc.). See EA, Table 17 and Appendix B for full list.

The project design must comply with the following project design features:

- **FLP Specific:** *Forested areas greater than 1/2 mile from a road should be excluded from commercial timber harvest.*

If relevant, use space below to list additional survey needs or pertinent information to include in Implementation Plan:

Stand data was reviewed for compartment 47, stand 45, where the proposed ~1.0 ac of dispersed site rehabilitation is being proposed. The stand is an upland hardwood-white pine stand. Commercial and/or non-commercial silvicultural treatments would not occur within this project. Manipulation of standing vegetation would be limited to felling of existing hazard trees to allow for implementation of project activities.

Hemlock Conservation Area #133 (Warwoman Ford) is located partially within stand 45 and is not in an IRA.

Maps and visual aids have been attached. Level of detail should be sufficient to allow for adequate planning and identification of issues and concerns.

Please select one of the statements below:

All activities shown in the draft plan have been reviewed for compliance with the Foothills Landscape EA or other relevant NEPA compliance and my resource. There are no changed conditions at the time of this review.

OR

All activities shown in the draft plan have been reviewed for compliance with the Foothills Landscape EA or other relevant NEPA compliance and my resource. There are changed conditions or specific actions that are not in compliance. These conditions or actions are listed below.

Click or tap here to enter text.

Signature Michael Starbuck
Silviculturist

IDT Leader or District Ranger

- Communicate IA location to Forest Land Surveyor early so that Boundary Management policies are followed, and concerns are either addressed and/or mitigated.
- Verify that all resource specific maps or visual aids have been completed.
- NEPA for any changed conditions or activities not covered in the Foothills Landscape EA or other existing analysis has been initiated. Please review each specialist section above to identify the specific conditions or actions not covered.
- Besides the resource specific PDFs listed above, the project design must also comply with the following project design features:
 - **FLP Specific:** All activities should be evaluated for their potential to affect NNIS. A risk assessment (Example in Appendix A of NNIS report) should be utilized prior to implementation of any activity to determine the risks and consequences of the action on NNIS, and the necessary mitigations included as part of the activity.
 - **Forest Plan Standard FW- 031:** As part of recurrent monitoring and any project inventories, include data collection on existing or potential threats such nonnative invasive species
 - **Forest Plan Standard FW- 032:** Nonnative invasive species shall be controlled with priority given to areas where they are causing adverse effects to federally listed species, or to individuals of other species needed to maintain their population viability on the national forest. Nonnative invasive species are not intentionally introduced near these species or individuals, nor will management actions facilitate their inadvertent introduction.
 - **Forest Plan Standard FW- 056:** When seeding disturbed soils, use only native or non-persistent non-native species per Region policy.

**Foothills Landscape Project
Pre-Implementation Process Guide and Checklist**

If relevant, use space below to list additional needs or pertinent information to include in Implementation Plan:

Click or tap here to enter text.

Signature _____ Taylor Hughes, Foothills IDT Lead _____
IDT Lead or District Ranger

Step 3: Draft Implementation Plan and Initiate Surveys

Instructions: District IDTs review data from initial field visits, surveys and inventories. The IDT works together to consider all information captured in Steps 1-2 above, identifies applicable project design features and recommend management actions needed for IA to the local Line Officer. The resulting information will be presented as a draft implementation plan (see end of this document) used to communicate the project-specific proposals for each IA to stakeholders and identify locations of remaining survey work/ data needs.

The following checklist provides guidance in completing the implementation plan attached to this document. This plan provides the baseline information necessary to comply with the overarching law, policy, and regulation while ensuring consistency with the final EA and DN. Each resource specialist is responsible for ensuring the information presented in this implementation plan is accurate and complete.

- All activities within the IA are fully listed and described. Please provide sheets for each project and summarize on the first page.
- Ensure all relevant resource maps are attached to Implementation Plan. Level of detail should be sufficient to allow for adequate planning and identification of issues and concerns.
- Ensure PDFs for each resource area (Step 2) have been included in the Draft Implementation Plan.
- Ensure that all activities (or specific conditions or activity components) that need additional analysis are clearly articulated in the Draft Implementation Plan.
- Determine any outstanding needs or missing data and add to the Implementation Plan.
 - Conduct site-specific inventories for botanical species based on forest risk assessment direction
 - Conduct site-specific inventories for NNIS species
 - Conduct other biological inventories as needed
 - Complete NNIS risk assessment to determine needed mitigations
 - Conduct site-specific inventories for cultural resources
 - Other

Use space below to provide additional information such as process for obtaining or detailed description of outstanding needs:

Section 7 consultation for Wild and Scenic River

Step 4: Present Draft Implementation Plan to Stakeholders (Foothills Collaborative Group)

Forest intends to engage the Foothills Collaborative Group (FCG) early and often throughout the life of the project to identify issues, concerns, and desires of its members. The FCG is *(will be)* a diverse, self-governing body of representatives from various interest groups and organizations who wish to assist the Forest in successful implementation of the FLP in accordance with the Final Environmental Assessment and Decision Notice.

The FCG would have opportunity to provide feedback and make recommendations on draft implementation plans prior to public notice. Utilizing collaborative input in this way allows for robust stakeholder influence throughout the life of the project. Ideally, having the FCG influence and refine draft implementation plans prior to public release will result in less controversial, more socially acceptable projects and help the agency accomplish its objectives with greater efficiency.

Summary of Comments Received:

Click or tap here to enter text.

Summary of how comments were incorporated into Implementation Plan:

Click or tap here to enter text.

Step 5: Public Notice and Opportunity for Input

Instructions: The Forest will hold an annual meeting (anticipated late summer/ early fall) to provide public assessment of the draft implementation plan(s), refined maps, and schedule. If planned activities are demonstrated to fall within the scope and scale of the final EA/DN, feedback received during the annual meeting will be considered by implementation teams and responsible official and used to further collaborative efforts and adjust implementation activities as appropriate. If subsequent analysis is needed due to new or changed conditions in the IA that were not accounted for in the programmatic EA/ DN, the Forest will also seek official comment in accordance with NEPA. Outyear plans may also be presented at this time with opportunity for public engagement, though in less detail.

Summary of Comments Received:

Click or tap here to enter text.

Summary of how comments were incorporated into Implementation Plan:

Click or tap here to enter text.

Step 6: Conduct Field Trip(s)/Educational Outreach

Instructions: Hold a public field trip of [Choose an item](#). IA. The Forest anticipates at least one field trip per year, depending on public interest. These field reviews will focus on pre-implementation priorities/concerns identified from Steps 2-4; however post-treatment and monitoring activities may be viewed on the same trip if desired and feasible. The FCG should help identify priorities or potential areas of concern, and subject matter experts for furthering education opportunities.

Summary of field trip details and comments received:

Click or tap here to enter text.

Summary of how comments were incorporated into Implementation Plan:

Click or tap here to enter text.

Step 7: Identify Additional Monitoring Needs

Instructions: Identify specific monitoring that may be needed. Those already listed in the Forest Plan are considered mandatory. Additional monitoring recommendations provided from the FCG will be considered. Any additional monitoring is at the discretion of the line officer.

Click or tap here to enter text.

Step 8: Finalize Implementation Plan

Instructions: The IDT will finalize the implementation plan. Update the draft plan created in Step 4 with information and revisions that resulted from public involvement and survey results. Ensure all aspects of this checklist have been completed, including signatures, before submitting for approval by the line officer (District Ranger). Ensure contracts, agreements, burn plans, or other implementation instruments are reflective of this framework. Ensure proprietary information is protected (cultural and T&E).

- Update final project acres and miles in Implementation Plan
- For each resource area, update final acres and ensure information is complete
- Finalize Silviculture prescriptions and marking guides
- Finalize prescribed burn plans
- Confirm all relevant PDFs are included
- Confirm all maps are attached
- Any additional analysis, if required, is completed and documentation is attached

Step 9: Submit for District Ranger Approval

Instructions: Submit the completed implementation plan to the District Ranger for review and approval.

I have ensured my district and SO specialists followed this guide as intended, and the resulting implementation plan and selected design features have been designed accordingly and in compliance with the final DN for the FLP. Additional information, if relevant to this review, has been documented below:

Click or tap here to enter text.

Signature _____
District Ranger

Step 10: Conduct Contract Review (if applicable)

The Timber Contracting Officer will review the contract package to ensure the applicable design features included in final implementation plan are identified within various contract C provisions.

Signature _____
Contracting Officer

Foothills Landscape Project Implementation Plan

Implementation Area: [Sarah's Creek](#)

Ranger District: Chattooga River

Date: August 24, 2022

Instructions: Use the tables and template(s) that follow to summarize all actions to be implemented within the IA; drafted during Step 3 and finalized during Step 8. The Plan Summary table should list all activities selected from the checklists below, with each activity described in detail in the section that follows. When completing all project information, ensure all information is sufficient and relevant to provide a full and detailed project description. The summary table below can be used to quickly track the number of projects within the IA and the acres or miles of disturbance impacts.

Plan Summary

Activities Implementable from Final DN: Select all that apply. See Table 17 in the EA for full description of action and connected actions.

Selected for this Project	Activities That are Part of This Project	Primary Actions	Location (ie. HUC, Compartment Stand, and or Geographic Description)	Draft Acres and/or miles of road/trails, etc.	Final Acres and /or miles of road/trails, etc.
<input type="checkbox"/>	Bog improvement actions including hydrologic restoration and removal of encroaching vegetation (may include commercial treatment)	Raise stream profiles by filling or plugging ditches Removing encroaching vegetation by commercial, non-commercial harvest	Click or tap here to enter text.	Click or tap here to enter text.	Click or tap here to enter text.
<input type="checkbox"/>	Canebrake restoration actions including overstory removal (may include commercial treatment)	Removing encroaching vegetation by commercial, non-commercial harvest	Click or tap here to enter text.	Click or tap here to enter text.	Click or tap here to enter text.
<input type="checkbox"/>	Small-whorled pogonia improvement actions including experimental canopy and midstory removal	Non-commercial thinning or hand clearing	Click or tap here to enter text.	Click or tap here to enter text.	Click or tap here to enter text.

**Foothills Landscape Project
Pre-Implementation Process Guide and Checklist**

Selected for this Project	Activities That are Part of This Project	Primary Actions	Location (ie. HUC, Compartment Stand, and or Geographic Description)	Draft Acres and/or miles of road/trails, etc.	Final Acres and /or miles of road/trails, etc.
<input type="checkbox"/>	Non-commercial release of hemlock trees to decrease susceptibility of hemlock to hemlock woody adelgid outside of HCAs	Individual tree release, non-commercial thinning	Click or tap here to enter text.	Click or tap here to enter text.	Click or tap here to enter text.
<input type="checkbox"/>	Designate small blocks of old growth	Allocate small blocks of old growth stands that are arranged in mosaics and connected by other habitat types	Click or tap here to enter text.	Click or tap here to enter text.	Click or tap here to enter text.
<input type="checkbox"/>	Stream habitat improvements	Add large woody debris to stream channels through cut and leave operations (mechanical and non-mechanical) Maintain and enhance existing in-stream structures Stabilize streambanks	Click or tap here to enter text.	Click or tap here to enter text.	Click or tap here to enter text.
<input type="checkbox"/>	Continuation of prescribed burning within existing burn blocks	Prescribed burning during dormant and/or early growing season on a recurring basis		Rocky Flats – 1172 acres Buffalo – 26 acres Bob Jones – 1191 acres	Click or tap here to enter text.
<input type="checkbox"/>	Decommissioning of maintenance level (ML) 2 and ML1 system roads	Close road/trail to public; may include full obliteration of roadbed, removal of stream crossing fills/ culverts with restoration of channel, crushing and burying inlets, seeding, fertilizing, mulching, drainage improvements, scattering slash, etc.	Click or tap here to enter text.	Click or tap here to enter text.	Click or tap here to enter text.
<input type="checkbox"/>	Implement changes to system road ML and/or use restrictions	Reduce ML in system roads, including seasonal closure in some roads update MVUM	Click or tap here to enter text.	Click or tap here to enter text.	Click or tap here to enter text.
<input type="checkbox"/>	Implement changes to system road ML and/or use restrictions	Increase ML, pave road, install safety features, improve drainage (NFSR 18, Holly Creek)	Click or tap here to enter text.	Click or tap here to enter text.	Click or tap here to enter text.

**Foothills Landscape Project
Pre-Implementation Process Guide and Checklist**

Selected for this Project	Activities That are Part of This Project	Primary Actions	Location (ie. HUC, Compartment Stand, and or Geographic Description)	Draft Acres and/or miles of road/trails, etc.	Final Acres and /or miles of road/trails, etc.
<input type="checkbox"/>	Reconstruction of existing roads that are causing sedimentation to streams, particularly within watersheds with 305b and 303d listed streams	Widen curves Upgrade culverts Harden or repair low-water stream crossings Upgrade or reconstruct drainage features, spot reconstruction if needed Upgrade surface material and configuration using Georgia BMPs	Click or tap here to enter text.	Click or tap here to enter text.	Click or tap here to enter text.
<input type="checkbox"/>	Decommission a section of Tatum Lead motorized trail and Milma Creek OHV trails	Close trail to public; may include full obliteration of roadbed, removal of stream crossing fills/ culverts with restoration of channel, crushing and burying inlets, seeding, fertilizing, mulching, drainage improvements, scattering slash, etc.	Click or tap here to enter text.	Last 1.8 miles	Click or tap here to enter text.
<input type="checkbox"/>	Convert the Tibbs All-Terrain vehicle (ATV) trail and a section of Milma Creek OHV trail back to a system road	Administratively convert a section of the trail back to a system road		Click or tap here to enter text.	Click or tap here to enter text.
<input type="checkbox"/>	Convert the Rocky Flats OHV trail back to a system road	Administratively convert a section of the trail back to a system road		3.3 miles	Click or tap here to enter text.
<input type="checkbox"/>	Decommission low-use trails (Murray's Lake Trail and Peeples Lake Trail)	Administrative removal of trails from system Update maps	Click or tap here to enter text.	Click or tap here to enter text.	Click or tap here to enter text.
<input type="checkbox"/>	Decommission Boggs Creek developed campground	Administratively decommission campground	Click or tap here to enter text.	Click or tap here to enter text.	Click or tap here to enter text.
<input type="checkbox"/>	Decommission Oakey Mountain developed campground	Close to public; remove all infrastructure (may include full obliteration of infrastructure), hardened surfaces, seeding, fertilizing, mulching, drainage improvements, scattering slash, etc.	Click or tap here to enter text.	Click or tap here to enter text.	Click or tap here to enter text.

Commercial Activities (May only occur in MRx suitable for timber production per selected Alternative (Alt 3)): Select all that apply. See Table 17 in the EA for full description of action and connected actions.

Selected for this Project	Activities That are Part of This Project	Primary Actions	Location (ie. HUC, Compartment Stand, and or Geographic Description)	Draft Acres and/or miles of road/trails, etc.	Final Acres and /or miles of road/trails, etc.
<input type="checkbox"/>	Restoration of southern yellow pine forest on dry sites dominated by mid to late-successional Virginia or white pine	Two aged regeneration harvest	Click or tap here to enter text.	Click or tap here to enter text.	Click or tap here to enter text.
<input type="checkbox"/>	Restoration of southern yellow pine forest or oak forest on sites currently occupied by off-site pine plantations (loblolly or white pine) or failed shortleaf or pitch pine plantations	Two-aged regeneration harvest	Click or tap here to enter text.	Click or tap here to enter text.	Click or tap here to enter text.
<input type="checkbox"/>	Maintenance of southern yellow pine forest	Commercial thinning	Click or tap here to enter text.	Click or tap here to enter text.	Click or tap here to enter text.
<input type="checkbox"/>	Maintenance of southern yellow pine forest	Expanding gap treatment	Click or tap here to enter text.	Click or tap here to enter text.	Click or tap here to enter text.
<input type="checkbox"/>	Maintenance of oak forest	Commercial thinning	Click or tap here to enter text.	Click or tap here to enter text.	Click or tap here to enter text.
<input type="checkbox"/>	Maintenance of oak forest	Expanding gap treatment	Click or tap here to enter text.	Click or tap here to enter text.	Click or tap here to enter text.
<input type="checkbox"/>	Commercial and non-commercial thinning of pine plantations to improve forest health	Commercial thinning	Click or tap here to enter text.	Click or tap here to enter text.	Click or tap here to enter text.
<input type="checkbox"/>	Create young forest (ESH) in mesic hardwoods	Two-aged regeneration harvest	Click or tap here to enter text.	Click or tap here to enter text.	Click or tap here to enter text.

**Foothills Landscape Project
Pre-Implementation Process Guide and Checklist**

Selected for this Project	Activities That are Part of This Project	Primary Actions	Location (ie. HUC, Compartment Stand, and or Geographic Description)	Draft Acres and/or miles of road/trails, etc.	Final Acres and /or miles of road/trails, etc.
<input type="checkbox"/>	Create young forest (ESH) by daylighting roads and permanent openings	Two-aged regeneration harvest	Click or tap here to enter text.	Click or tap here to enter text.	Click or tap here to enter text.
<input type="checkbox"/>	Creating young oak forest (ESH)	Shelterwood or two-aged regeneration harvests	Click or tap here to enter text.	Click or tap here to enter text.	Click or tap here to enter text.
<input type="checkbox"/>	Restoring open woodland habitats on appropriate sites	Commercial or non-commercial thinning	Click or tap here to enter text.	Click or tap here to enter text.	Click or tap here to enter text.
<input type="checkbox"/>	Canopy gap creation in closed-canopied mesic stands	Commercial and non-commercial thinning Overstory and midstory reduction w/ variable tree density retention; gaps implemented would total <25% of stand acreage with gap size no more than ¼-acre each.	Click or tap here to enter text.	Click or tap here to enter text.	Click or tap here to enter text.
<input type="checkbox"/>	Create or expand permanent openings	Remove trees Prepare site by grading and stump removal		2-3 acres each for a total of 6-10 acres	Click or tap here to enter text.
<input type="checkbox"/>	Reduce hazardous fuels in the WUI	Mid-story reduction Commercial or non-commercial thinning	Click or tap here to enter text.	Click or tap here to enter text.	Click or tap here to enter text.

Non-Commercial Action(s): Select all that apply. See Table 17 in the EA for full description of action and connected actions.

Selected for this Project	Activities That are Part of This Project	Primary Actions	Location (ie. HUC, Compartment Stand, and or Geographic Description)	Draft Acres and/or miles of road/trails, etc.	Final Acres and /or miles of road/trails, etc.
<input type="checkbox"/>	Maintenance of oak forest	Mid-story reduction	Click or tap here to enter text.	Click or tap here to enter text.	Click or tap here to enter text.
<input type="checkbox"/>	Maintenance of oak forest	Crown-touching release with manual methods	Click or tap here to enter text.	Click or tap here to enter text.	Click or tap here to enter text.
<input type="checkbox"/>	Commercial and non-commercial thinning of pine plantations to improve forest health	Non-commercial thinning	Click or tap here to enter text.	Click or tap here to enter text.	Click or tap here to enter text.
<input type="checkbox"/>	Replacement of culverts, fords, or bridges to increase aquatic organism passage and function	Replacement of culverts, fords, or bridges	Click or tap here to enter text.	Click or tap here to enter text.	Click or tap here to enter text.
<input type="checkbox"/>	Prescribed fire in new burn blocks to facilitate restoration or maintenance of fire-adapted ecosystems or to reduce hazardous fuels	Prescribed burning during dormant and/or early growing season on a recurring basis	Click or tap here to enter text.	Click or tap here to enter text.	Click or tap here to enter text.
<input type="checkbox"/>	Willis Knob Horse Trail Improvements	Construct new trail Re-route and construct/re-construct portions of trail on areas with resource concerns outside of the WSR, block or obliterate problem portions of trail Relocate parking area Construction of connector trails from parking to campground Campground improvements	Click or tap here to enter text.	Click or tap here to enter text.	Click or tap here to enter text.

**Foothills Landscape Project
Pre-Implementation Process Guide and Checklist**

Selected for this Project	Activities That are Part of This Project	Primary Actions	Location (ie. HUC, Compartment Stand, and or Geographic Description)	Draft Acres and/or miles of road/trails, etc.	Final Acres and /or miles of road/trails, etc.
<input checked="" type="checkbox"/>	Develop and maintain sustainable recreation within the WSR corridor – Earls Ford	Construction of new system trails Removal and restoration of degraded sites and designation of dispersed camping areas	Dispersed recreation sites within the Chattooga River WSR corridor, adjacent to Earls Ford Road.	1.0 acres	Click or tap here to enter text.
<input type="checkbox"/>	Willis Knob Horse Trail Improvements within the WSR	Re-route and construct/re-construct portions of trail on areas with resource concerns, block or obliterate problem portions of trail	Click or tap here to enter text.	Click or tap here to enter text.	Click or tap here to enter text.

Action(s) or Conditions that Need Additional Analysis (Please Refer to Step 2 Resource Sections):

Specific Action or Condition Needing Analysis, if applicable	Analysis complete?
Section 7 Consultation under Wild & Scenic River Act	<input type="checkbox"/> yes <input checked="" type="checkbox"/> no
Click or tap here to enter text.	<input type="checkbox"/> yes <input type="checkbox"/> no
Click or tap here to enter text.	<input type="checkbox"/> yes <input type="checkbox"/> no
Click or tap here to enter text.	<input type="checkbox"/> yes <input type="checkbox"/> no

Activity Name: Develop and maintain dispersed sustainable recreation within the Chattooga River WSR Corridor

Detailed Description:

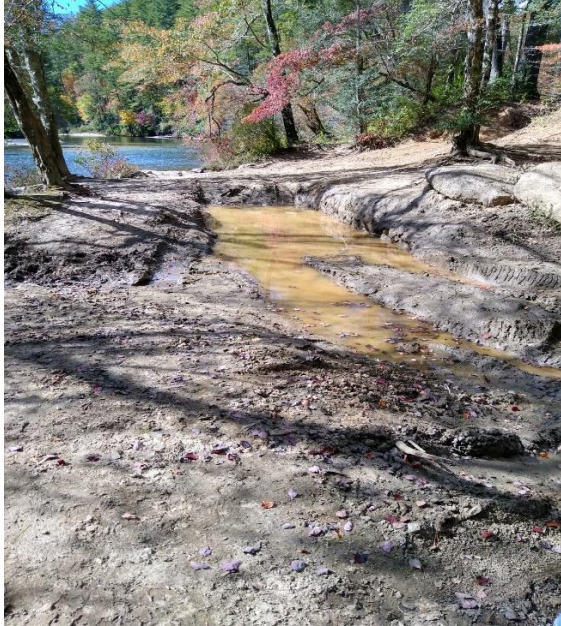
Dispersed recreation (user-created campsites and trails) and illegal motorized vehicle activities within the WSR Corridor of the Chattooga River have resulted in extensive impacts to riparian habitat within stream management zones. These impacts include, soil compaction, loss of riparian vegetation, reduced streambank stability, and increased sediment production to aquatic habitats within the Chattooga River. To achieve the desired watershed and aquatic/riparian restoration objectives, proposed actions would reduce the availability for dispersed camping within the WSR Corridor within 0.25 miles of Earls Ford Road. Prohibitions on dispersed camping within the WSR Corridor are addressed in Forest Order # FMS-13-01, which states that dispersed camping is prohibited within 50ft from the Chattooga River, and no less than 0.25 miles from Earls Ford Road (36 CFR 261.58 (e)). The Forest may identify exceptions to this prohibition and designate suitable dispersed campsites within the WSR Corridor that do not meet the above minimum distances, but these sites must be appropriately signed (CFR 261.50 (e)(6)). This project would include the rehabilitation of approximately 1.0 acres riparian habitat within the Chattooga River WSR Corridor adjacent to Earls Ford Road between Warwoman Creek and the Chattooga River.

Proposed Actions:

A. Dispersed Camping and Watershed Restoration within Chattooga River WSR Corridor

1. Eliminate ability for motorized vehicles to operate outside the established Earls Ford Road prism, and onto NFS lands within the WSR Corridor:
 - Install bollards or large boulders along southern edge of Earls Ford Road.
 - Bollards or large boulders would be installed every 4ft-5ft on the southern edge of Earls Ford Road and extend approximately 40ft-60ft from the terminus of Earls Ford Road at the edge of the Chattooga River (high-water mark elevation) westward towards Warwoman Ford.
 - Final design and placement of traffic control devices will consider potential impacts to visual qualities within the WSR Corridor, safety of public users, effectiveness, and sustainability.
2. Rehabilitate 1.0 acres of riparian habitat within the SMZ of the Chattooga River that have been impacted by the dispersed recreation and illegal motorized vehicle activities referenced above.
 - The upper 2"-4" of the upper soil profile would be de-compacted using mechanical equipment to allow for reestablishment and growth of desired native riparian vegetation.
 - Those areas where illegal motorized activities have created user-created trails and alterations to landforms within this riparian area heavy equipment would be used to recontour slopes and fill erosion gullies currently posing chronic sediment sources to the Chattooga River.

- Seeding with native vegetation and/or placement of appropriate ground cover would occur within this 1.0 acres to reduce further erosion and promote reestablishment of ground vegetation.
3. To achieve desired watershed and riparian restoration objectives within the WSR Corridor, dispersed camping on NFS lands adjacent to Earls Ford Road would be designated and in compliance with Forest Order # FMS-13-01 (36 CFR 261.58 (e)).



Map(s) Attached

Watershed(s) (6th-level HUC) where activity is planned:

Sarah's Creek HUC# 30601020206

MRx(s) where activity would occur: 2.A.1 Designated Wild & Scenic River

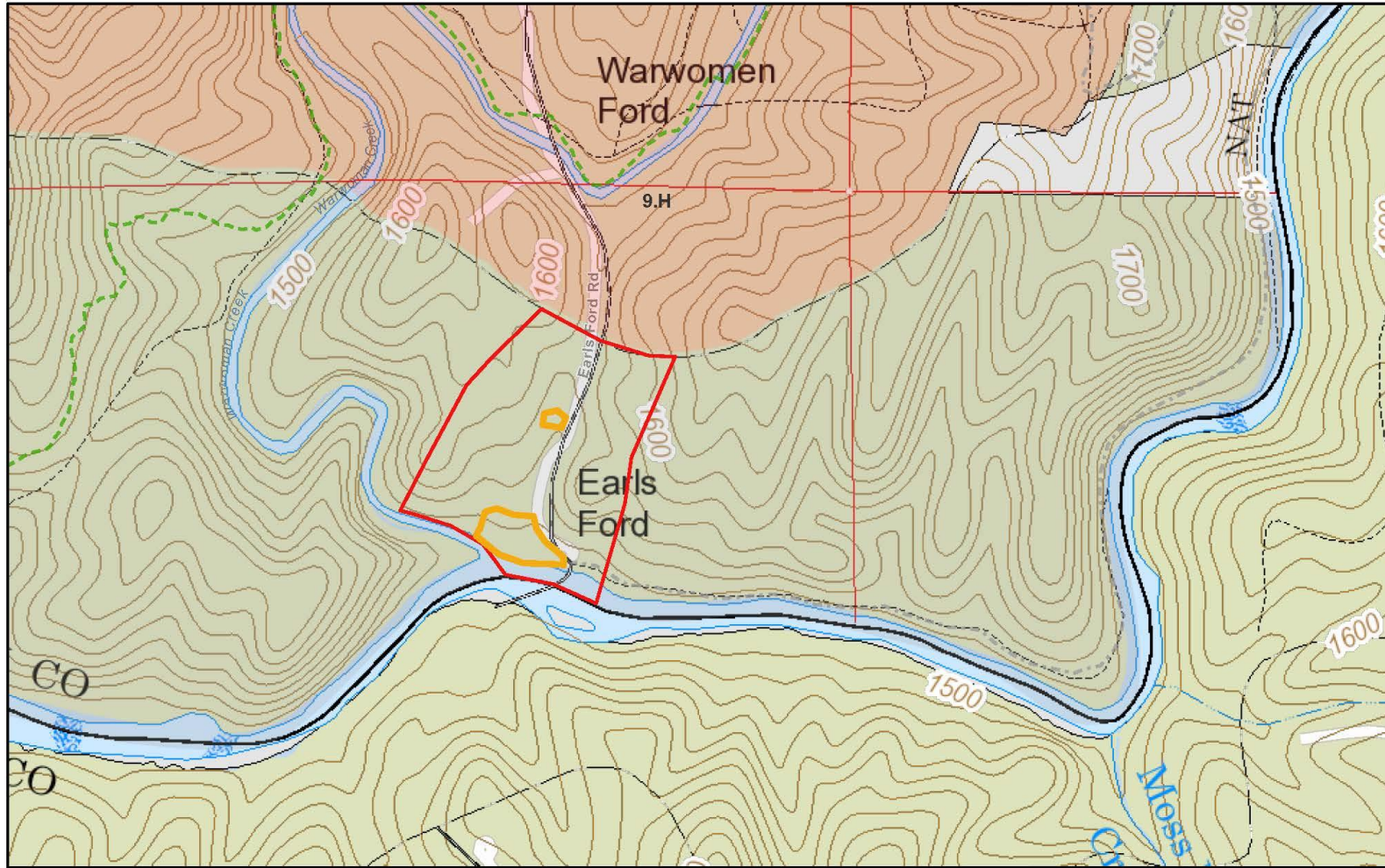
Resource Project Design Features: Do project activities follow all listed resource-specific PDFs in Step 2?

Yes **No** (If no, document if additional analysis per NEPA is triggered and if so, analysis is referenced and/or attached prior to finalization.)

Additional Project Design Features: *Add any additional Project Design Features necessary to avoid significant impacts. Use list at end of this plan in Attachment A to guide selection of all that apply. List PDF numbers.*

PDF 11; PDF 12; PDF 16; PDF 21; PDF 7

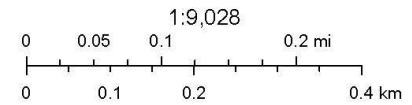
Dispersed Recreation Sites: Chattooga River WSR



9/21/2022, 8:59:17 AM

Chattahoochee Oconee Trails Forest Plan Prescriptions 2004

- Hike
- Horse
- 9.H
- Other



Esri, NASA, NGA, USGS, FEMA, Esri Community Maps Contributors, © OpenStreetMap, Microsoft, Esri, HERE, Garmin, SafeGraph, USFS Staff

US Forest Service Enterprise Map Services Program | Esri, NASA, NGA, USGS, FEMA | Esri Community Maps Contributors, © OpenStreetMap, Microsoft, Esri, HERE, Garmin, SafeGraph, GeoTechnologies, Inc, METI/NASA, USGS, EPA, NPS, US Census Bureau,

Attachment A: Additional Project Design Features

PDF Number: Location or Condition	Project Design Features, Best Management Practices, and Standards	Origin
<p>PDF 1: All Restoration Actions that Use Herbicides</p>	<p>No herbicide is ground applied within 100 feet of lakes, wetlands, streams, except for aquatic-labeled herbicides to prevent significant environmental damage</p>	<p>Forest Plan Standard FW-022</p>
	<p>Herbicide mixing, loading, or cleaning areas in the field are not located in sensitive areas as identified in the project decision document, or within 200 feet of private land, open water, or wells (or ephemeral streams FW-024)</p>	<p>Forest Plan Standard FW-023</p>
	<p>No soil active herbicide with a half-life longer than three months is broadcast within 25 feet of ephemeral streams. Selective treatments with aquatic-labeled herbicides are allowed. Such areas are clearly marked before treatment so that applicators can easily see and avoid them.</p>	<p>Forest Plan Standard FW-025</p>
	<p>Site-specific analysis of proposed management actions will identify any protective measures needed in addition to Forest Plan standards, including increasing the width of protective buffers where needed.</p>	<p>Forest Plan Standard FW-029</p>
	<p>Milkweed species would be avoided during herbicide spraying.</p>	<p>FLP Specific</p>
	<p>Pesticide Use – See Appendix B, Attachment 1 of the Vegetation Specialist Report</p>	<p>FLP Specific</p>
<p>PDF 2: Old growth stands, at the time of implementation, that meet minimum age criteria for old-growth based on Old-Growth Type</p>	<p>Non-conserved “possible old-growth”, defined as stands meeting the minimum age criteria for their respective Old-Growth Type that are not currently conserved by Management Prescription or through small block allocations associated with this alternative, would be assessed prior to implementation of project activities within these areas to determine if they meet the other defining criteria for old-growth conservation. If so, these areas would be conserved for old-growth. Management actions that conflict with old-growth characteristics, as described by the Forest Plan, would not be permitted in areas conserved. The exception would be for Old-Growth Types 22 and 24.</p>	<p>Forest Plan Standard (FWS – 046 FWS – 054)</p>
<p>PDF 3: All vegetation management actions in all conditions</p>	<p>During all vegetation management activities, dogwoods and other soft-mast producers would be reserved from treatment, where practicable and to the extent compatible with meeting treatment objectives</p>	<p>Forest Plan Standard (FWS – 008) and FLP Specific</p>
<p>PDF 4: All vegetation treatments that include Oak regeneration (2,000 acres) or mesic hardwood regeneration (500 acres) treatments</p>	<p>Oak-dominated forest types on mesic sites would not be converted to pine-dominated cover types, but could be managed as mixed oak-pine forest types</p>	<p>Forest Plan Standard (FWS – 004)</p>
	<p>For areas proposed for mesic hardwood regeneration to create young forest habitats, regeneration treatments would be limited to yellow poplar-dominated stands or stands dominated by other non-oak cover hardwood associates. This would include Forest Types 50, 56, 58 and/or 41.</p>	<p>FLP Specific</p>
<p>PDF 5: All vegetation treatments that include regeneration harvests (yellow pine restoration, oak restoration, oak regeneration, mesic hardwood regeneration)</p>	<p>When regeneration treatments are applied, sites would be regenerated to native tree species that commonly occur or historically occurred naturally on ecologically comparable sites within the same ecological section.</p>	<p>Forest Plan Standard (FWS – 001)</p>
	<p>Stands dominated by Eastern hemlock would not be subject to regeneration treatments.</p>	<p>Forest Plan Standard (FWS – 002)</p>

PDF Number: Location or Condition	Project Design Features, Best Management Practices, and Standards	Origin
	Even-aged or two-aged regeneration areas in or adjacent to deciduous or mixed forests must include a 50-foot zone along mature forest edges in which intensity of silvicultural treatment decreases, resulting in a feathered edge.	Forest Plan Standard (FWS – 007)
	The maximum size of an opening created by even-aged or two-aged regeneration treatments is 40 acres. For yellow pine, 80 acres is permitted if restoration requires larger openings.	Forest Plan Standard (FWS – 086)
	Openings created by even-aged regeneration or two-aged regenerations harvest units shall be separated from each other by a minimum of 330 feet (5 chains). However, such openings may be clustered closer than 330 feet as long as their combined acreage does not exceed the maximum opening size (40 acres). An opening created by regeneration harvest would no longer be considered an opening when the re-established stand reaches five years in age.	Forest Plan Standard (FWS – 087)
	Regenerated stands shall meet the minimum stocking standards for the intended/desired forest type within five years after final harvest cut, as listed in the Forest Plan Table 2-5.	Forest Plan Standard (FWS – 089)
	In even-aged and two-aged regeneration, retain all snags unless they are an immediate hazard. Sales would be designed to avoid snag removal if possible (skid trails, landings). Retain (or create) five snags per acre: near the forest edge if possible. In even-aged and two-aged regeneration stands larger than 10 acres, maintain a minimum of 15 sq. feet of basal area. These could be arranged in clumps, corridors, or feathered edges. In stands over 10 acres treated as seed tree or shelterwood, maintain a minimum of 20 sq. feet of basal area. Retain all trees within 20 feet of five snags per acre for windthrow protection and snag recruitment	Forest Plan Standard (FWS 091).
PDF 6: All Prescribed Fire in all Conditions	When necessary, to include mesic deciduous forests within prescribed burning blocks as part of burning other adjacent fire-dependent forest types, only low intensity fires are permitted, except when prescribed burns are designed to encourage oak regeneration in mesic oak forests. Exclude such mesic areas lacking a significant oak component from burn units, unless by doing so, it would result in: (1) failure to meet other prescribed fire objectives, or (2) more than 30% increase in plowed or bladed fire-line construction per burn unit.	Forest Plan Standard (FWS – 191 and FSW – 0190)
PDF 7: All mechanical vegetation management	Skidding would not occur within riparian corridors, except for at designated crossings.	GA BMP
	No heavy equipment, other than mechanical fellers, would be allowed to operate within the riparian corridors during harvest activities. The exception to this would be at designated crossings.	GA BMP
	Once the temporary roads, log landings, and skid trails are no longer needed, they would be closed to normal vehicle traffic so that illegal use is discouraged. The closures may include installation of an earthen barrier, re-contouring, decompaction, placement of logging debris along the road surface, seeding or placement of boulders.	FLP Specific
	Log landings and skid trail locations would be evaluated and approved by the Forest Service prior to harvesting in order to ensure that they are placed in locations with adequate drainage and away from sensitive soils or riparian areas as per the Georgia State BMP recommendations.	FLP Specific
	Skidding and decking would be limited to designated and approved routes along ridges and gentle slopes to protect sensitive soils. Skidding would not be allowed on sustained slopes	FLP Specific

PDF Number: Location or Condition	Project Design Features, Best Management Practices, and Standards	Origin
	over 35%. Coordination will be completed when skid trails and decking coincide with system trails.	
	No tree removal may occur within 0.25 mile of a known NLEB hibernaculum at any time of the year (NLEB 4d rule) unless agreed to during consultation with U.S. Fish & Wildlife Service	FLP Specific (ESA Consultation)
	No tree removal may occur within a 150-foot radius of known, occupied NLEB roost trees during June or July each year (NLEB 4d rule) unless agreed to during consultation with U.S. Fish & Wildlife Service	FLP Specific (ESA Consultation)
	Protect known Indiana bat or other endangered bat roosts from cutting or modification until they are no longer suitable as roost trees.	Forest Plan Standard FW-233
	Snags are not intentionally felled from April 1 through August 31 (exceptions may be made for safety, insects, and disease).	Forest Plan Standard FW-235
	Non-silvicultural projects removing trees or snags (fireline construction, rec projects, hazard tree removal) should be completed during September 1-March 31. This applies to the parts of the forest that provides "suitable" habitat for Indiana bat roosting (GIS analysis).	Forest Plan Standard FW-236
	In all silvicultural treatments, retention priority is given to the largest available trees with favorable characteristics as bat roost trees (yellow pines and oaks with crevices, cracks, or hollows).	Forest Plan Standard FW-237
	Compliance with standards FW-90, 91, 233-237 will be monitored and report submitted annually to USFWS. Report will include acres of timber harvest and prescribed burning; time of year accomplished.	Forest Plan Standard FW-238
	Mature forest cover is maintained within 100 feet from the top of cliffs and 200 feet from the base of cliffs.	Forest Plan Management Prescription 9.F-017
	Vegetation management activities would not utilize existing trails as access routes without a review by recreation staff. Trails used would be restored to the original trail width and characteristics if determined appropriate per sustainable recreation objectives. Blaze trees that define the trail corridor would not be cut unless to mitigate safety concerns.	FLP Specific
	Layout of regeneration areas would incorporate a no-harvest zone between unit boundaries and open Forest system roads that have a HIGH scenic integrity objective.	FLP Specific
	Layout of regeneration areas by design would leave areas un-harvested along prominent ridgelines and/or sites of higher elevation that have a HIGH or MODERATE scenic integrity objectives to reduce "sky-lighting" effects and to obscure areas of lower elevation in regeneration.	FLP Specific
	Logging equipment must be inspected and found to be clean (free of vegetative debris) seed, soils, etc. upon arrival to timber sale areas.	FLP Specific
	Known NNIS infestations must be shown on timber sale area maps. Ensure that equipment washing clauses are included in all ground-disturbing contracts and sales documents, and that clauses are discussed in pre-work conferences.	FLP Specific
	When possible, significant infestations of NNIS along planned access routes would be pre-treated systematically within timber sale areas in order to prevent the spread of NNIS into new areas.	FLP Specific
	Skidding through known populations of NNIS should be avoided to reduce the potential for spread.	FLP Specific
PDF 8: All mechanical vegetation and prescribed fire treatments	Coordinate with district recreation staff to post advance notices when trails or recreation sites are to be closed during harvest operations and prescribed burning.	FLP Specific

PDF Number: Location or Condition	Project Design Features, Best Management Practices, and Standards	Origin
	Trails, roads, or facilities would be rehabilitated to pre-existing condition if damaged during project operations, in coordination with district recreation staff.	FLP Specific
	Vegetation treatments that occur within or adjacent to developed sites, dispersed sites, or trails would be coordinated with local recreation /facility staff to protect facility and lessen impacts to visitors to the extent possible. Project activities that occur within or adjacent to developed sites, dispersed sites, or trails would be conducted outside the major use season whenever possible, with the understanding that most facilities are open year-round. Developed sites will be temporarily closed for visitor protection during active operations. Portions of sites and trails may be temporarily closed for visitor protection or possible restrictions placed on silvicultural activities during times of high use.	FLP Specific
	Where possible, while implementing proposed treatments, make improvements within recreation sites and along system trails. Examples include cleaning up logs and debris from past projects, removing hazard trees surrounding developed sites, and/or cutting existing stumps to less than six inches.	FLP Specific
	Harvest facilities such as temporary roads and landings, and fireline construction will be assessed for continued use to meet other resource needs (i.e., additional trailhead parking, loop trails, wildlife openings, etc.)	FLP Specific
PDF 9: Prescribed Fire Treatments in all Conditions	Minimize the amount and concentration of smoke entering populated areas; prevent/minimize public health and safety hazards, including impacts to sensitive sites (schools, hospitals, etc.), visual impacts on highways, airports, etc. (both day and night); avoid exceedances of the National Ambient Air Quality Standards (NAAQS); and protect visibility in Class 1 areas	USDA Forest Service Southern Region's Smoke Management Guidelines
	All activities will meet the requirements of applicable regulations established in pursuit of state or federal air quality goals. While the Forest Service cannot unilaterally guarantee the quality of air (generally, or at a specific point) within an airshed, it does ensure that its management activities would be conducted with full adherence to pollution control methodologies and technologies prescribed by air quality regulatory agencies.	Forest Plan Standard FW-230
	In leases and other agreements that permit other parties to use Forest land or resources, the Forest Service will require the permittee to meet the requirements of all applicable regulations established in pursuit of state or federal air quality goals.	Forest Plan Standard FW-231
	The Forest Service will assess relevant aspects of air quality within the Forest, either through its own efforts, in cooperation with other agencies, or by review of the results of other agency monitoring in/near the Forest.	Forest Plan Standard FW-232
	Adhere to Forest Service Manual 5100 Wildland Fire Management, Chapter 5140 Hazardous Fuel Management and Prescribed Fire, Chattahoochee-Oconee Supplement, as amended, regarding parameters to consider when developing a prescribed fire burn plan. Parameters include, but are not limited to: fuel moisture, relative humidity, wind speeds, Keetch-Byram Drought Index (KBDI), days since rain, temperatures, and probability of ignition.	Forest Service Manual 5100 Wildland Fire Management, Chapter 5140 Hazardous Fuel Management and Prescribed Fire, Chattahoochee-Oconee Supplement R8-5100-2009-1
	Basic mesic forests are excluded from prescribed burning blocks where this can be accomplished without large increases in fireline construction. When necessary, to include mesic deciduous forests within burning blocks, direct firing will not be done within these communities unless necessary to secure control lines. In these cases, only low intensity fires are allowed.	Forest Plan Management Prescription 9.F-016
	Locate and construct firelines to minimize mineral soil exposure by utilizing natural barriers,	GA BMP

PDF Number: Location or Condition	Project Design Features, Best Management Practices, and Standards	Origin
	installing firebreaks along the contour, installing proper water diversions, and using gradual grades as outlined in the Forest Plan and Georgia’s BMP Handbook. Establish a vegetative cover as soon as possible to reduce erosion and sedimentation.	
	Prescribed burn plans written for areas near caves or mines that contain bats identify these sites as smoke sensitive targets and plan to avoid smoke entering cave or mine openings when bats are present.	Forest Plan Standard FW-034
<p>PDF 10: All activities within Ephemeral Zones (the area within 25 feet on either side of ephemeral streams)</p>	<p>Implement current Georgia Rules and Regulations for Water Quality Control (Chapter 391-3-6) for all projects as a minimum to meet water quality objectives. GA BMPs for Forestry would be met or exceeded to meet water quality objectives for all activities. Consistent with GA BMP (2019 p. 21), silvicultural activities should:</p> <ul style="list-style-type: none"> • Minimize soil disturbance, litter layer removal, and avoid high-intensity fire within ephemeral areas. These activities can increase the possibility of introducing pollutants to intermittent or perennial streams. • Cover inadvertently exposed soils with logging debris, grass, or mulch. • Minimize equipment trafficking within and around ephemeral areas. Should trafficking be justifiable due to site constraints, take precautions to minimize soil disturbance and litter layer removal. Placement of logging debris or logging mats in traffic areas may be appropriate. Debris, mats, and other soil protecting structures should not interfere with the natural flow of water. • Avoid direct tie-in of turnouts and outfall of water bars/breaks to ephemeral areas. Extra care should be taken where a skid trail crosses an ephemeral area. 	Forest Plan Standard FW-070, GA BMPs
	Motorized vehicle use in ephemeral stream zones is restricted to designated crossings. Motorized vehicles are allowed outside designated crossings on a case-by case basis when vehicle entry would create less ground disturbance than cable winching.	Forest Plan Standard FW-077
	Partial suspension is required when yarding logs over ephemeral streams, unless an improved crossing is used, e.g., culvert or bridge.	Forest Plan Standard FW-079
	Temporary culverts or bridges will be used to cross ephemeral streams where needed to protect channel stability or minimize erosion or scouring. Culverts will be removed when activities are completed, and the ephemeral stream zone will be restored to a natural condition. Stabilize disturbed soils at crossings.	Forest Plan Standard FW-082
	Recreation trails, campsites, and other permanent recreational developments are located, designed, and constructed outside the ephemeral stream zone (25 feet on each side). Those causing unacceptable resource damage will be closed and/or rehabilitated.	Forest Plan Standard FW-083
	Use fuel-break construction and/or mitigation methods that: (a) leave the root mat intact; (b) do not leave bare mineral soil exposed, and © do not create landforms that will drain directly into ephemeral streams for 25 feet on either side of ephemeral streams. Such methods include wet lines or use of existing constructed or natural barriers. If fuel-break construction results in breaking the root mat and thus exposure of bare mineral soil and connection to an ephemeral stream, restore the fire break for 25 feet on each side of the stream with re-shaping the soil surface and placing a soil cover in a timely manner to minimize erosion.	Forest Plan Standard FW-084
<p>PDF 11: All heavy mechanical equipment use in parking lot activities</p>	Operators should drive, operate, and store heavy equipment only within the proposed development footprint or the disturbed corridors of the surrounding roads and parking areas, so as to limit soil compaction and vegetation cover loss in the surrounding area. Additionally, bulldozer debris and excavated material from grading and digging operations should not be pushed into the surrounding natural forest areas. Construction should be designed and	FLP Specific

PDF Number: Location or Condition	Project Design Features, Best Management Practices, and Standards	Origin
	completed with no additional impacts to the riparian area.	
PDF 12: All heavy mechanical equipment uses	Soil rutting should be kept to a minimum.	Regional soil standard
	Compaction in an activity area should not exceed a 15% increase in bulk density in the upper 8 inches of the soil.	Regional soil standard
PDF 13: Mastication activities	The operator should try to move in a straight direction. Pivot turns should be kept to a minimum and turns should be conducted in a broad arc as the surrounding terrain and timber would allow in order to minimize soil disturbance. Care should be taken to avoid moving over the same piece of ground more than three times or use areas that have already been compacted through other activities.	FLP Specific
PDF 14: Temporary road construction	Temporary roads would follow the general contour as practical and would generally not exceed sustained grades over 10%.	GA BMP
	The travel way of temporary roads would generally not exceed 14-16 feet except at turnouts and landings.	GA BMP
	Drainage structures, such as outsloping and waterbars, would be installed along temporary roads when the use of the road is no longer needed.	GA BMP
	Temporary roads would be constructed on previous existing routes (old woods roads, skid trails, system trails) where possible to minimize the need for new temporary road construction.	FLP Specific
PDF 15: Timber harvest activities within the riparian corridor	Establish Streamside Management Zones (SMZ) on both sides of designated trout streams and tributaries according to the following options: Option A: For perennial trout streams and tributaries, a minimum 100-foot SMZ that includes a no-harvest zone within the first 25-feet of primary or secondary trout streams. Timber harvests within the remaining 75-feet of the SMZ should leave an average of 50 square ft of basal area per acre or at least 50% canopy cover. Option B: For perennial trout streams and tributaries within the 100-ft. SMZ, leave an average of 50 square feet of basal area per acre evenly distributed throughout the zone to provide shade. Option B may be selected if a qualified professional is consulted. Option C does not apply to CONF. The minimum CONF riparian corridor is 100 feet.	GA BMP
PDF 16: All activities within Riparian Corridor	Major actions that create long-term impacts are prohibited in the riparian corridor. Examples are roads or trails (excluding designated crossings), recreation sites and facilities, log landings, and permanent wildlife openings. Existing examples of the above are permitted if not causing environmental damage.	Forest Plan Standard 11-001
	Minor actions that create short-term impacts are permitted in the riparian corridor with appropriate mitigation and monitoring of impacts. Examples of minor actions include silvicultural activities needed to meet resource objectives for riparian-associated species, bank stabilization, temporary road construction and stream crossings associated with these activities.	Forest Plan Standard 11-002
	For all projects, additional protection, such as wider riparian corridor distances, higher residual canopy cover, restrictions on activities, etc. will be identified through site-specific inventories and surveys, site-specific biological evaluations, and site-specific mitigations identified in project NEPA documents.	Forest Plan Standard 11-003
	Silvicultural activities conducted within the riparian corridor will be conducted to meet or exceed compliance with the current edition of GA BMPs for Forestry	Forest Plan Standard 11-022
	Tree removals may only take place (in the riparian corridor) if needed to enhance the	Forest Plan Standard 11-024

PDF Number: Location or Condition	Project Design Features, Best Management Practices, and Standards	Origin
	recovery of the, rehabilitate disturbances, provide habitat for T&E, RFSS, or riparian-associated species, reduce fuel buildup, provide for visitor safety, or for approved facility construction/renovation	
PDF 17: Culvert and/or bridge maintenance, removal, or modification	Culverts and bridges (and any other man-made structure) would be surveyed for roosting bats before they are removed or modified, and if significant bat roosting is found, the structure would be maintained, or alternative roosts made available prior to removal or destruction	Forest Plan Standard FW-035
	Culverts that are barriers to stream biota passage in waters of aquatic Threatened, Endangered, and Sensitive species have priority for replacement over culverts in waters without Threatened, Endangered, and Sensitive Species.	Forest Plan Standard FW-042
PDF 18: Timber sales	In salvage timber sales, all live den trees and an average of 5 of the largest suitable snags (snags with exfoliating bark) per acre will be retained. Snags in early stages of decay should be favored over older snags for retention. Snags should be clumped if possible.	Forest Plan Standard FW-090
	In even aged and two aged regeneration, retain all snags unless they are an immediate hazard. Sales will be designed to avoid snag removal if possible (skid trails, landings). Retain (or create) 5 snags per acre, near the forest edge if possible. In even-aged and two-aged regeneration stands larger than 10 acres, maintain a minimum of 15 sq. feet of basal area. These can be arranged in clumps, corridors, or feathered edges. In stands over 10 acres treated as seedtree or shelterwood, maintain a minimum of 20 sq. feet of basal area. Retain all trees within 20 feet of 5 snags per acre for windthrow protection and snag recruitment.	Forest Plan Standard FW-091
PDF 19: Activities around caves and/or mines	For caves and mines suitable of supporting cave-dependent species, a minimum buffer of 200 feet is maintained around portals. Prohibited activities within this buffer include use of wheeled or tractor vehicles (except on existing roads or for cave protection and maintenance), mechanical site prep, vegetation cutting, rec site construction, tractor-constructed firelines, herbicide application, and new road construction, skid trails, and log landings.	Forest Plan Management Prescription 9.F-021
PDF 20: All vegetation treatments that create young forest habitats (10,100 acres)	Within individual project areas to be implemented within the Foothills Landscape area, an assessment of existing acres of young forest habitats (stands less than 11 years old) would be made prior to implementation to determine the maximum amount of young forest that could be created. Such assessments would be tiered to the applicable Management Prescription allowances contained within each individual project IA. Young Forest habitats would not be created in excess of the maximum amounts allowed by each Management Prescription singly or combined.	FLP Specific (MRx compliance)
PDF 21: Any ground-disturbing activities	Botanical surveys would be completed in accordance with Forest risk assessments in suitable habitats for T&E and Sensitive species prior to any ground disturbing activities.	FLP Specific

Attachment B: Monitoring Plan

Resource Assessed	Monitoring Question/Objective	Frequency	Field Method/Data Collection	Documentation Format	Primary Responsibility
Soil Productivity & Water Quality	Are Best Management Practices (BMPs) being implemented through timber sale contract provisions, and according to Forest Plan standards?	During operational periods (timber sales, site prep, road construction and maintenance)	Evaluate implementation of BMPs and timber sale contract provisions. All timber sale units are evaluated for implementation.	Timber sale inspection forms, filed in timber sale contracts, reviewed by FSR	District Timber Sale Administrator, Harvest Inspector, Forest Service Representative (FSR)
Soil Productivity & Water Quality	Are the Best Management Practices and applicable Forest Plan standards effective in meeting soil productivity and water quality standards?	During operational periods and within one year after operations end.	Field evaluation of the effectiveness of BMPs to meet Forest Plan standards. Random sample of harvest units using line transects & point samples	Field inspection forms, filed in S.O.	Interdisciplinary Team (Forest personnel in hydrology, soils, timber)
Best Management Practices Implementation – Audit by GFC	Were Best Management Practices implemented per Georgia’s Forestry BMP Handbook and effective in protecting water quality?	During operational periods and within one year after operations end.	Field evaluation of randomly selected harvest units and prescribed burns by Georgia Forestry Commission water quality personnel. This occurs across the state on federal land as well as state and private ownership.	Completion of GFC Best Management Practice Audit Form, filed in state database	Georgia Forestry Commission Water Quality personnel

Resource Assessed	Monitoring Question/Objective	Frequency	Field Method/Data Collection	Documentation Format	Primary Responsibility
Revegetation of Disturbed Areas	Were the prescribed revegetation efforts on disturbed sites such as skid trails, landings, skid trails, and fire lines implemented and effective in establishing ground cover and erosion protection?	Within one growing season of revegetation operations.	Visual evaluation of disturbed areas that have been revegetated to assess that sites have been seeded and rehabilitated to ensure revegetation is successful.	Field visual inspection of random sample of revegetated areas, documented on timber sale inspection reports	Timber Sale Administrator
Non-Native Invasive Plants	Are NNIS populations present within planned harvest/activity areas prior to treatment?	During project preparation/layout	Field inventory and mapping of NNIS populations	Inventoried populations will be mapped and treatment planned. Populations identified through risk assessment process prior to implementation may be added to Sale Area Map as required by Foothills NNIS Risk Assessment	District Silviculturist, District Timber Management Assistant (TMA), Presale Forester, District Wildlife Biologist
Non-Native Invasive Plants	Identify NNIS in treated areas as required by Foothills NNIS Risk Assessment and treat new infestations	Up to five field seasons after harvest activities have been completed as required by Foothills NNIS Risk Assessment	Field inspections to identify establishment or spread of NNIS as required by Foothills NNIS Risk Assessment	Inventoried populations will be mapped and treatment planned.	District Silviculturist, District TMA, District Wildlife Biologist
Rare Plants	Are rare plant protections adequate to protect populations?	During timber sale layout and operational periods	Field inspection of known rare plant populations.	Timber sale inspection reports	Timber Sale Administrator, District Wildlife Biologist

Resource Assessed	Monitoring Question/Objective	Frequency	Field Method/Data Collection	Documentation Format	Primary Responsibility
Timber	Are timber harvest activities adhering to applicable Forest Plan standards?	Throughout the life of the timber sale contract	Field inspections through all phases of harvesting to ensure contract provisions are being met and implemented in compliance with the Forest Plan.	Timber sale inspection reports	Harvest Inspector, Timber Sale Administrator, Forest Service Representative, District Wildlife Biologist, District Timber Management Assistant
Reforestation	Are harvested stands regenerated and restocked within five years of harvest?	One and three years after planting trees, and at 5 years or later after site preparation has been completed with natural regeneration	Field evaluation of sample plots and/or field inspection will be used to determine stocking, composition and condition of regeneration.	Report documented in FACTS database	District Silviculturist
Heritage	Are Forest Plan standards effective in protecting cultural and heritage resources?	During and immediately after harvest activities	Field inspections of sites to ensure the protection or avoidance of heritage resources.	Timber sale inspection reports	Timber Sale Administrator, Archeologist